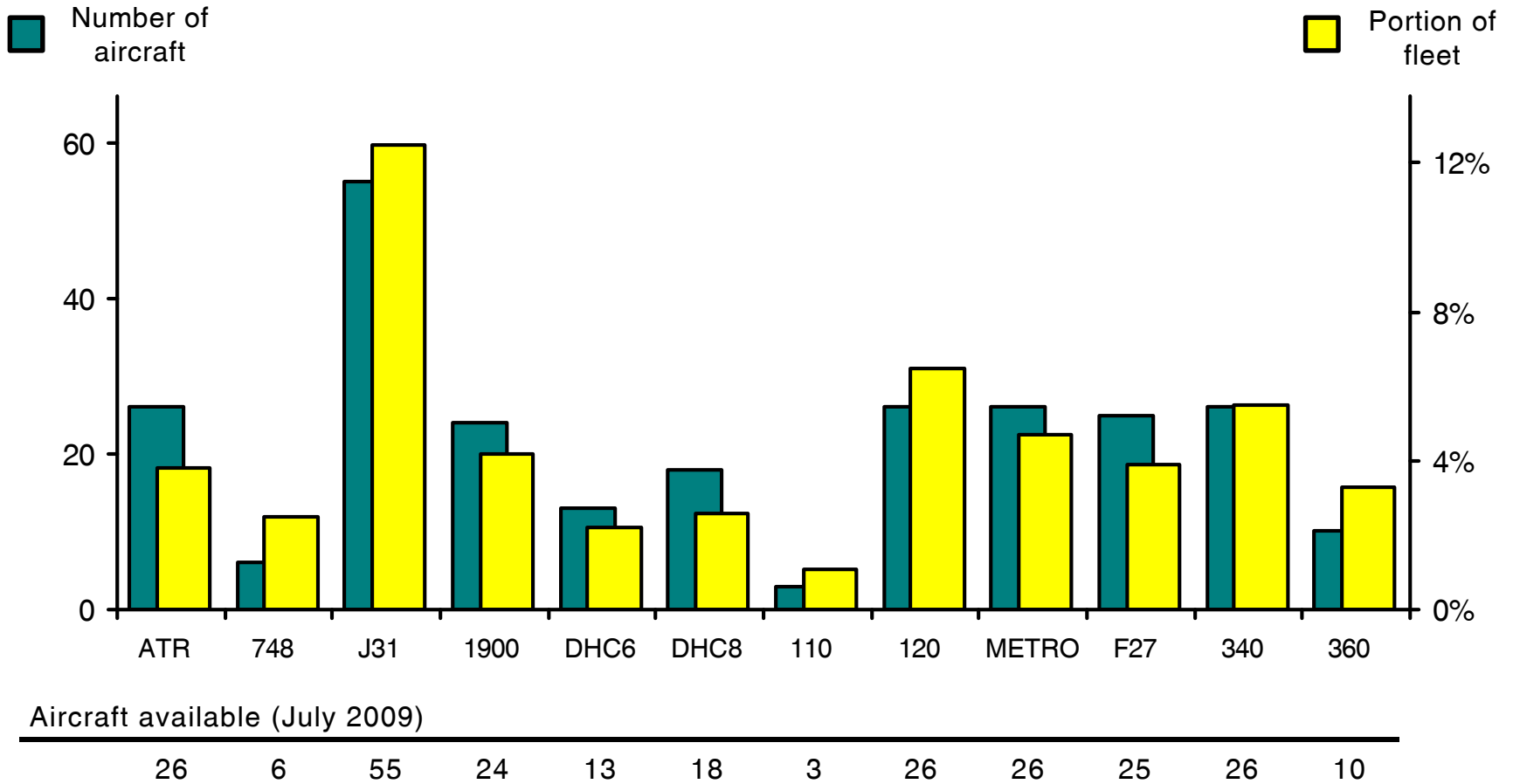


WORLDWIDE COMMERCIAL TRANSPORT AIRCRAFT AVAILABILITY

Turboprop Aircraft Available: 276

(including C212, DHC7, Do228, Do328 and L100/C130)



Aircraft available (July 2009)

Source: Airfax®

Note: 748 includes ATP, J31 includes J32/J41, F27 includes F50, Metro includes Merlin IV and 360 includes Shorts SD7/330 aircraft