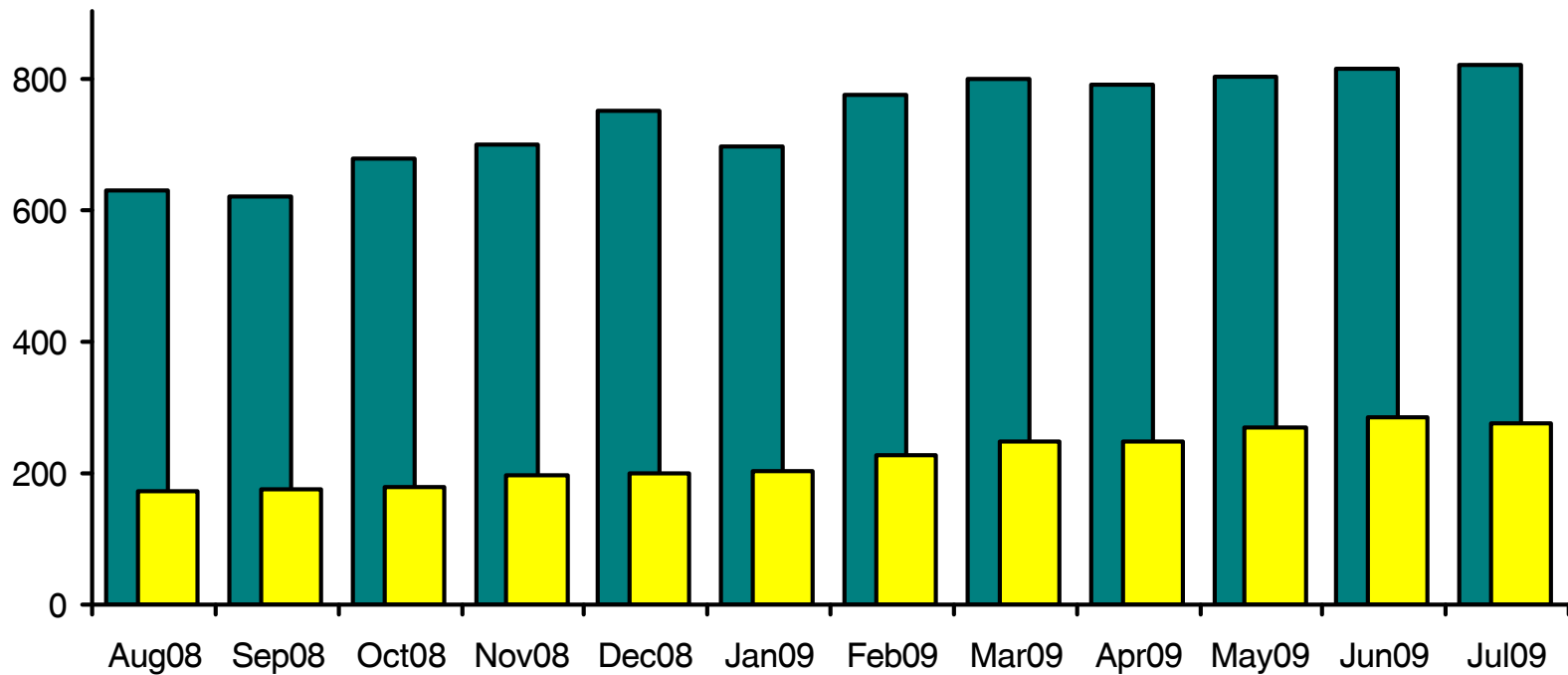


WORLDWIDE COMMERCIAL TRANSPORT AIRCRAFT AVAILABILITY

- Jet aircraft
- Turboprop aircraft

Total Aircraft Available: 1097



Aircraft available (Aug08-Jul09)

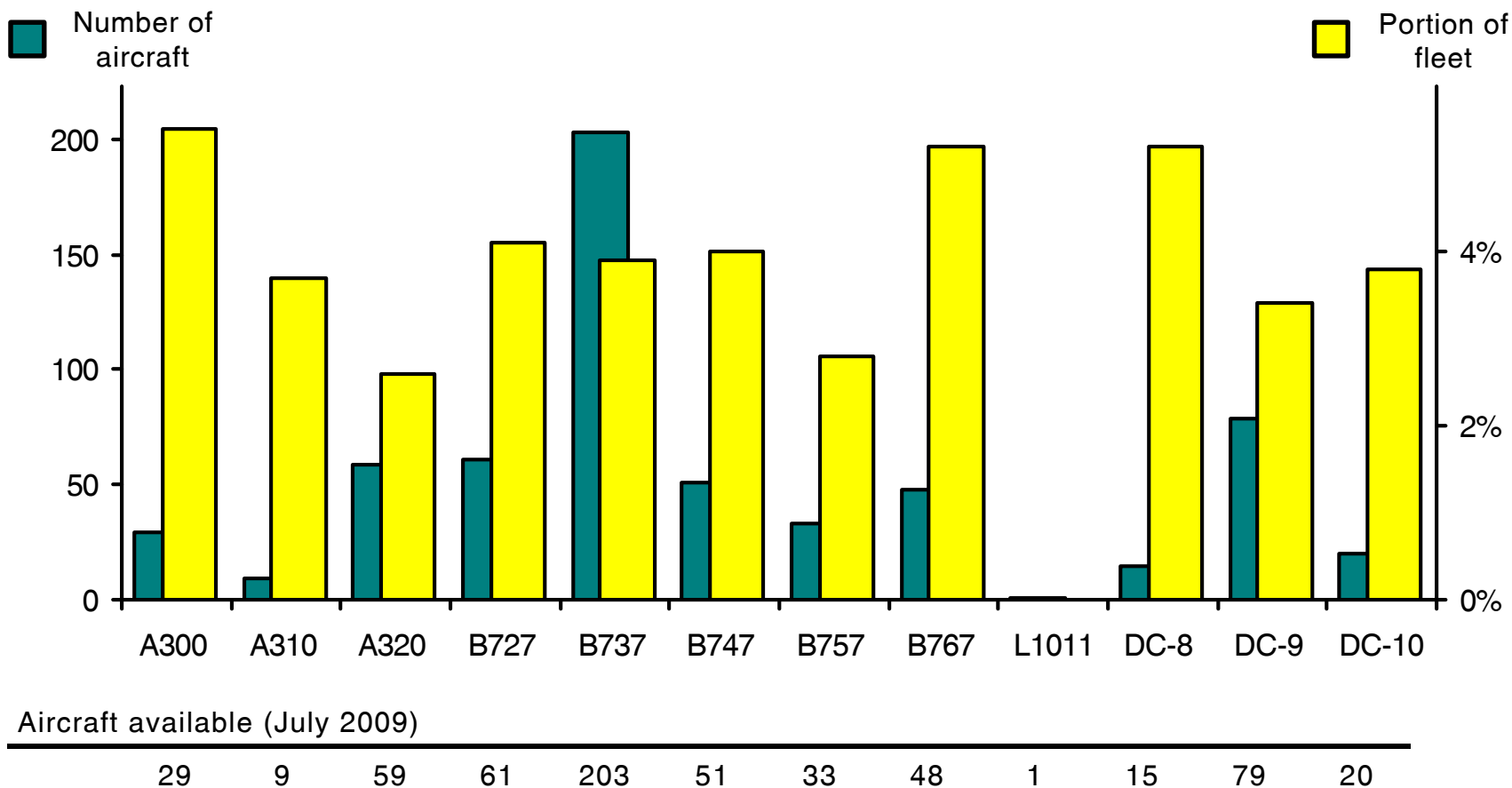
Jet:	631	622	680	701	750	698	776	800	792	802	816	821
Turboprop:	173	176	180	196	200	203	226	249	249	271	284	276
Total:	804	798	860	897	950	901	1002	1049	1041	1073	1100	1097

Source: **Airfax**[®]

WORLDWIDE COMMERCIAL TRANSPORT AIRCRAFT AVAILABILITY

Jet Aircraft Available: 821

(including A330, A340, BAC1-11, B717, B777, CRJ, ERJ, E170/190, F28, F70/F100 and 328Jet)



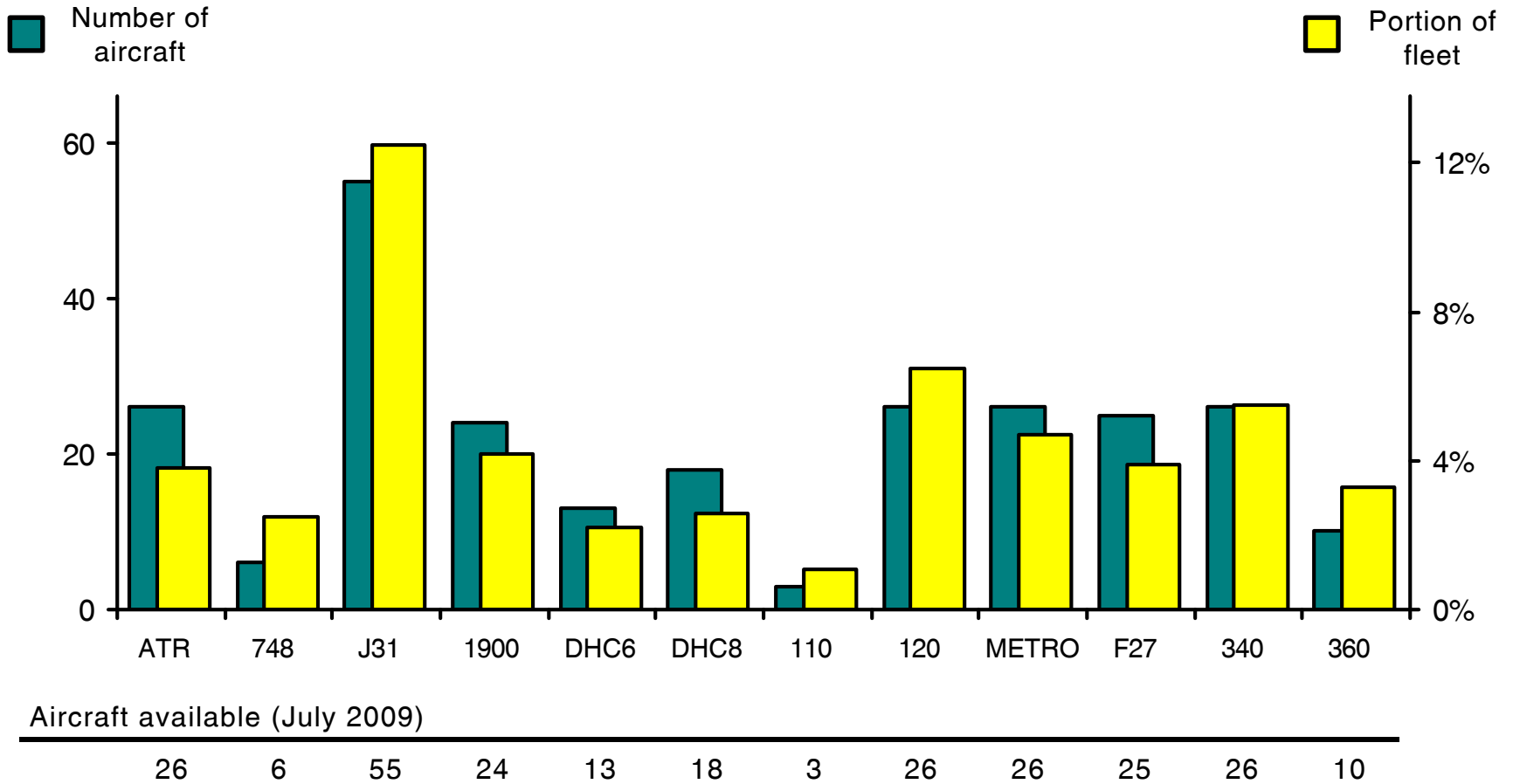
Source: Airfax®

Note: DC-9 includes MD80 aircraft, DC-10 includes MD 11 aircraft

WORLDWIDE COMMERCIAL TRANSPORT AIRCRAFT AVAILABILITY

Turboprop Aircraft Available: 276

(including C212, DHC7, Do228, Do328 and L100/C130)



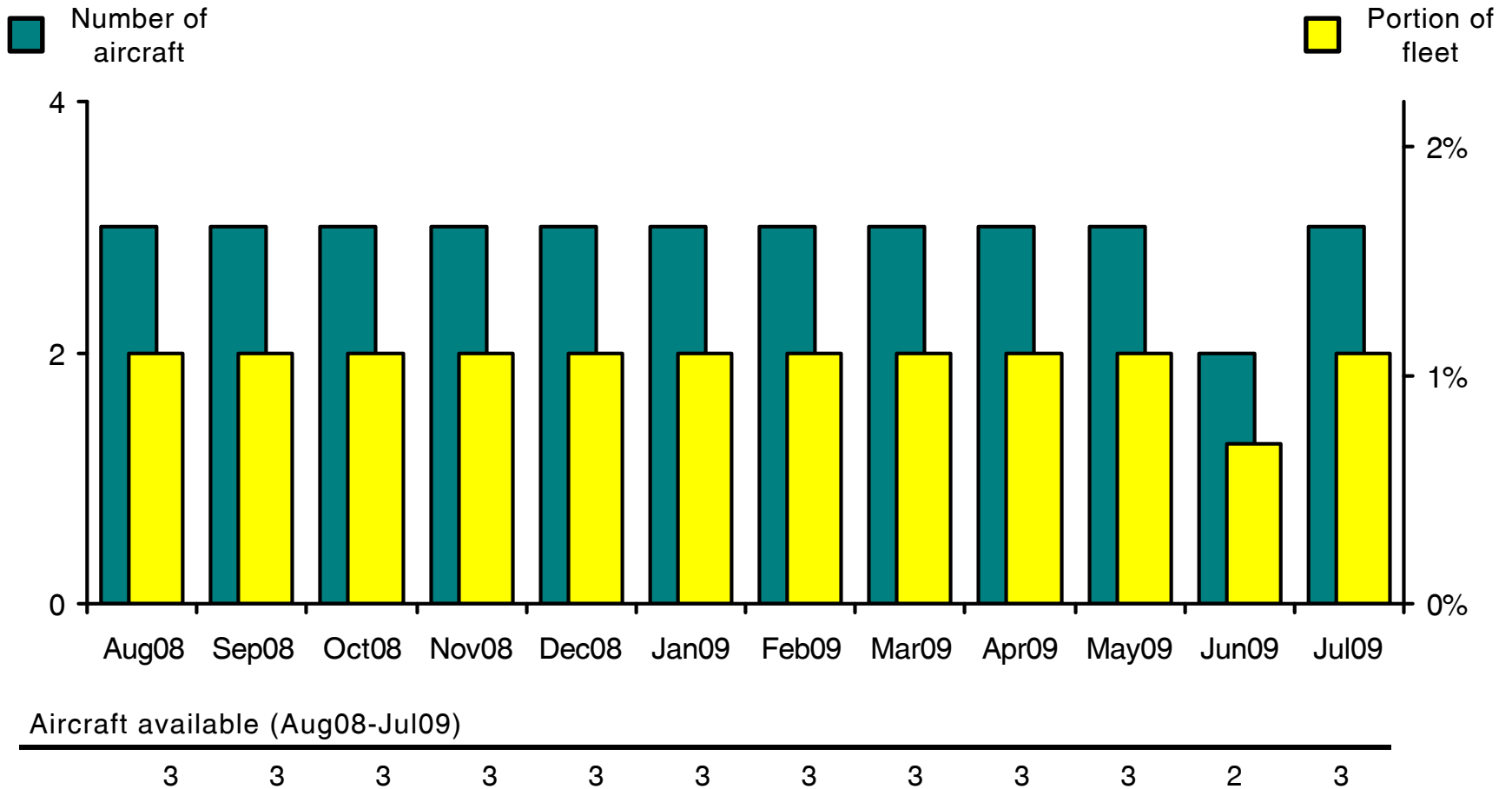
Aircraft available (July 2009)

Source: Airfax®

Note: 748 includes ATP, J31 includes J32/J41, F27 includes F50, Metro includes Merlin IV and 360 includes Shorts SD7/330 aircraft

WORLDWIDE COMMERCIAL TRANSPORT AIRCRAFT AVAILABILITY

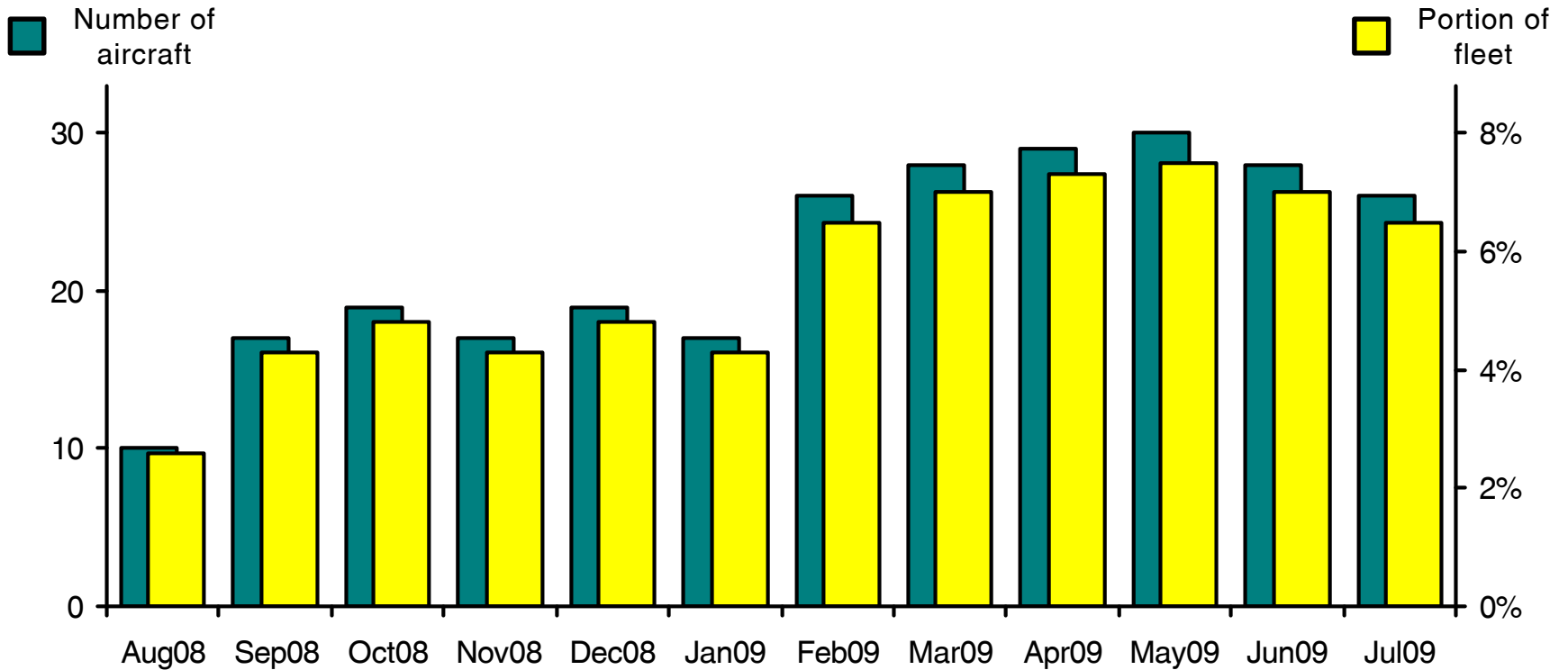
Embraer EMB-110 Bandeirante Aircraft Availability



Source: Airfax®

WORLDWIDE COMMERCIAL TRANSPORT AIRCRAFT AVAILABILITY

Embraer EMB-120 Brasilia Aircraft Availability



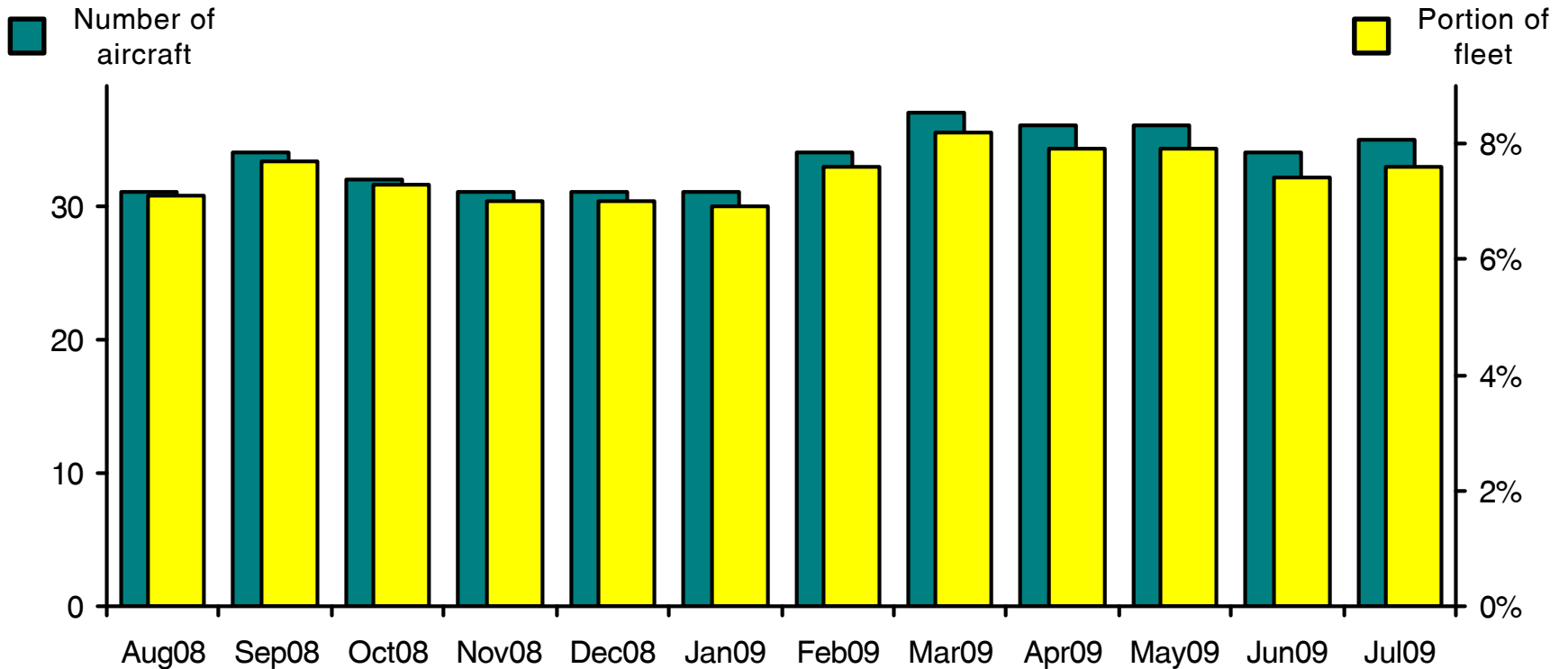
Aircraft available (Aug08-Jul09)

10 17 19 17 19 17 26 28 29 30 28 26

Source: Airfax®

WORLDWIDE COMMERCIAL TRANSPORT AIRCRAFT AVAILABILITY

BAe 146/RJ Aircraft Availability



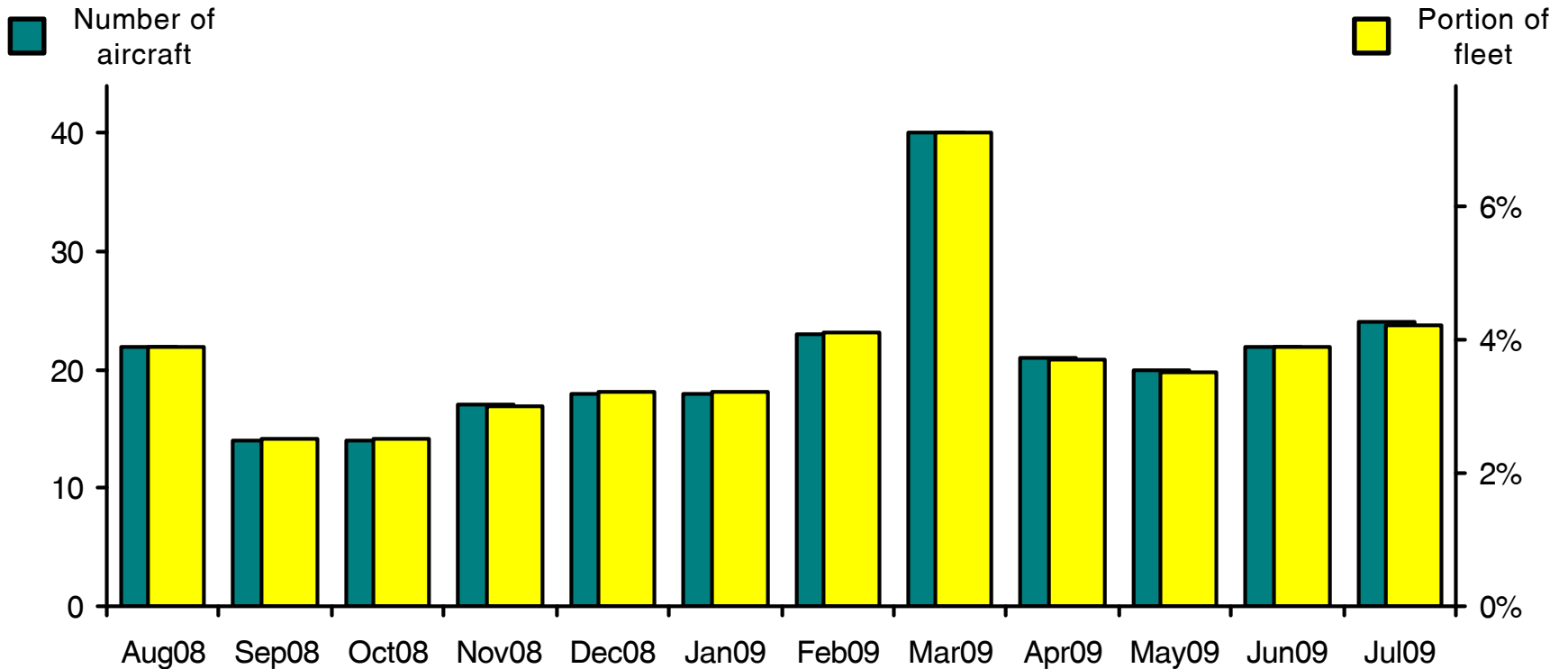
Aircraft available (Aug08-Jul09)

31 34 32 31 31 31 34 37 36 36 34 35

Source: Airfax®

WORLDWIDE COMMERCIAL TRANSPORT AIRCRAFT AVAILABILITY

Beech 1900 Aircraft Availability



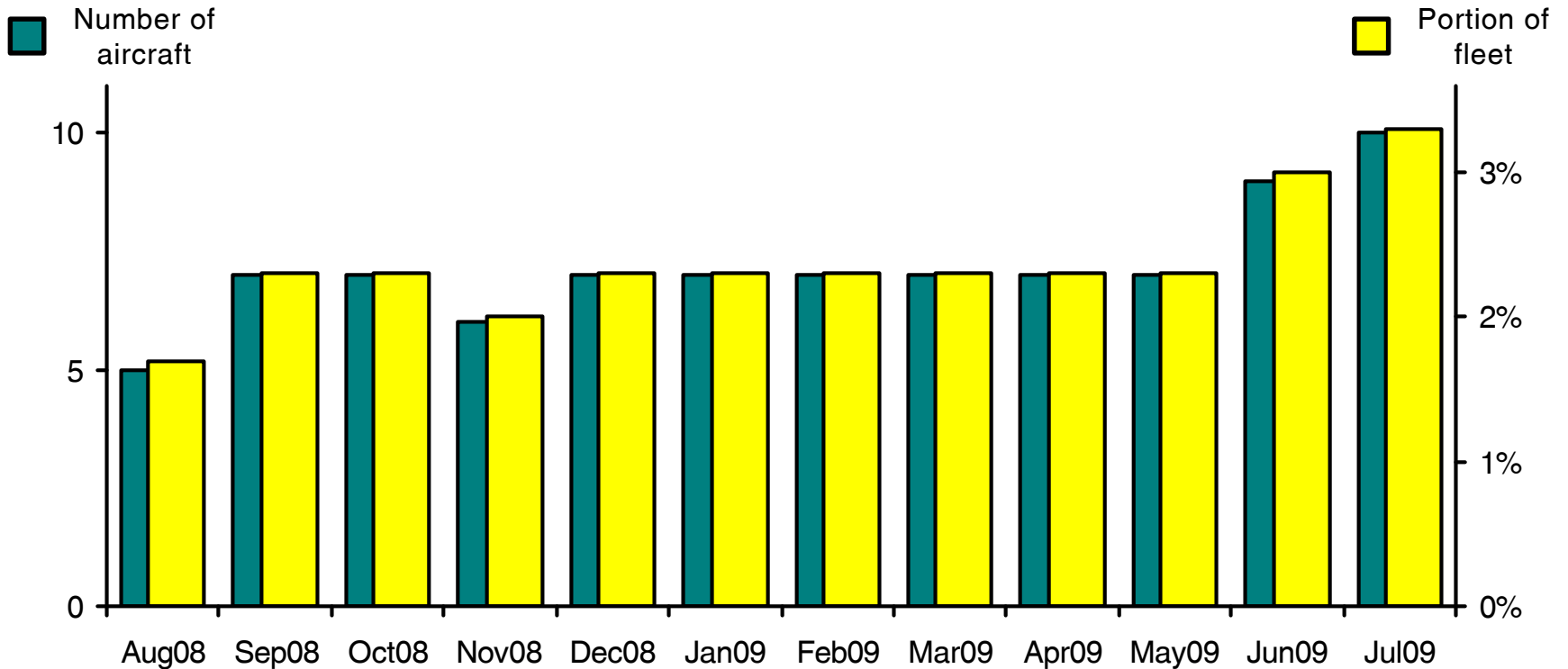
Aircraft available (Aug08-Jul09)

22 14 14 17 18 18 23 40 21 20 22 24

Source: Airfax®

WORLDWIDE COMMERCIAL TRANSPORT AIRCRAFT AVAILABILITY

Shorts SC7 / SD330 / SD360 Aircraft Availability



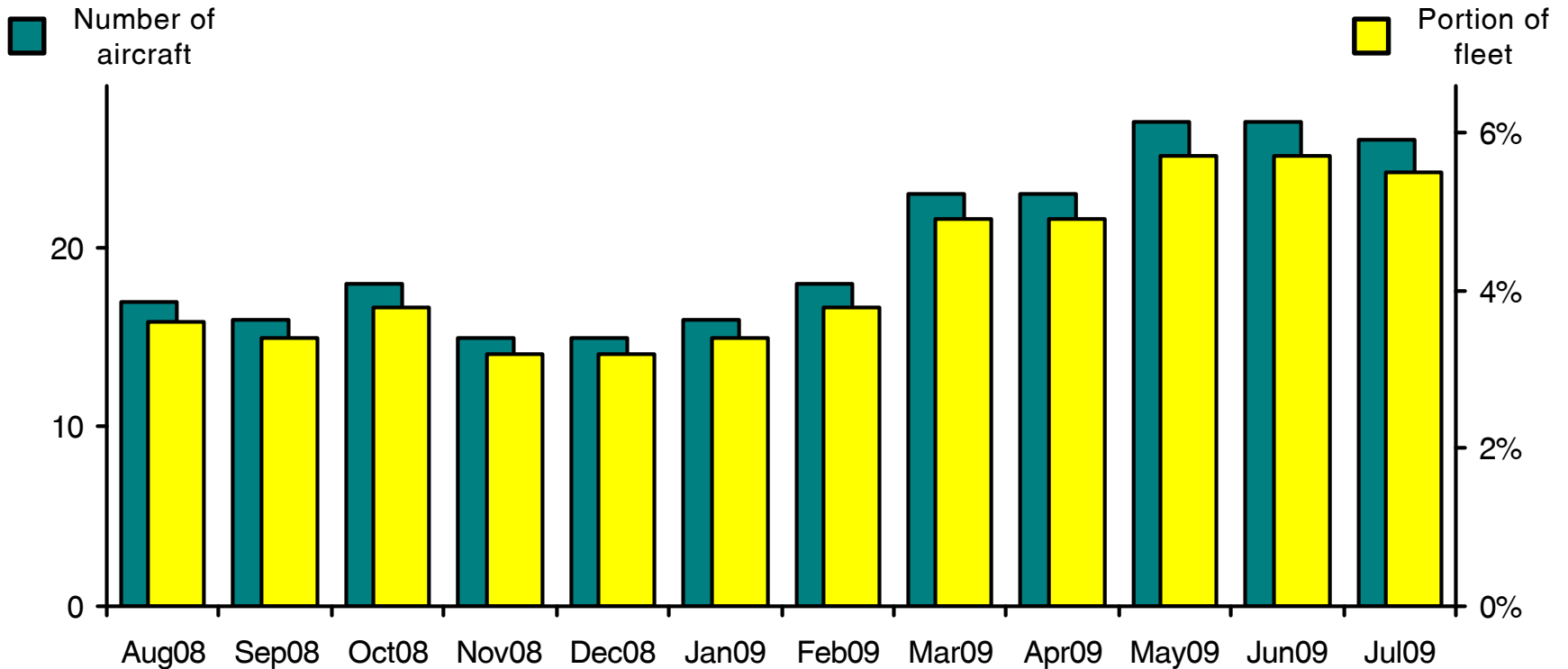
Aircraft available (Aug08-Jul09)

5 7 7 6 7 7 7 7 7 7 9 10

Source: Airfax®

WORLDWIDE COMMERCIAL TRANSPORT AIRCRAFT AVAILABILITY

Saab 340 / 2000 Aircraft Availability

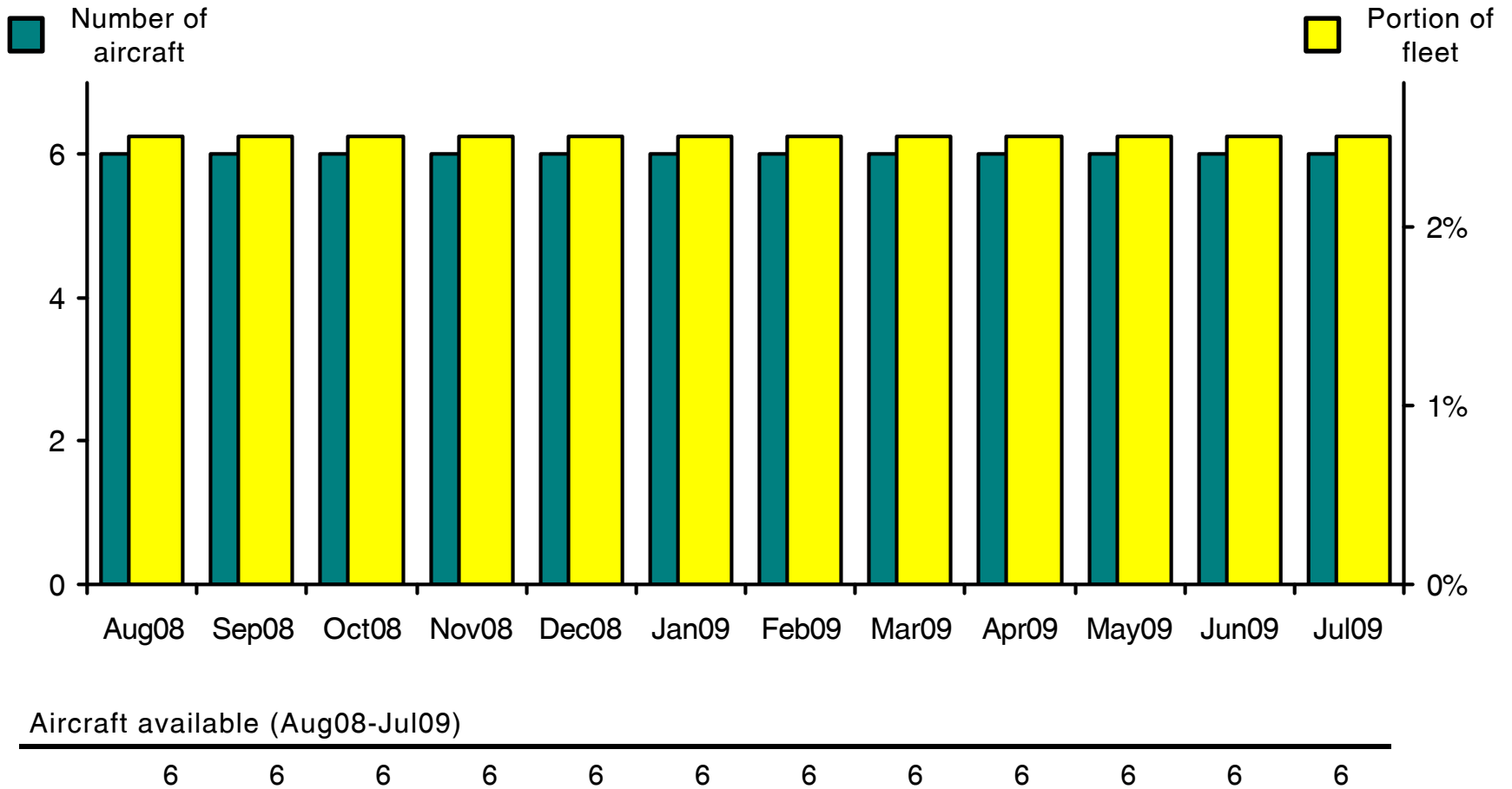


Aircraft available (Aug08-Jul09)

17 16 18 15 15 16 18 23 23 27 27 26

WORLDWIDE COMMERCIAL TRANSPORT AIRCRAFT AVAILABILITY

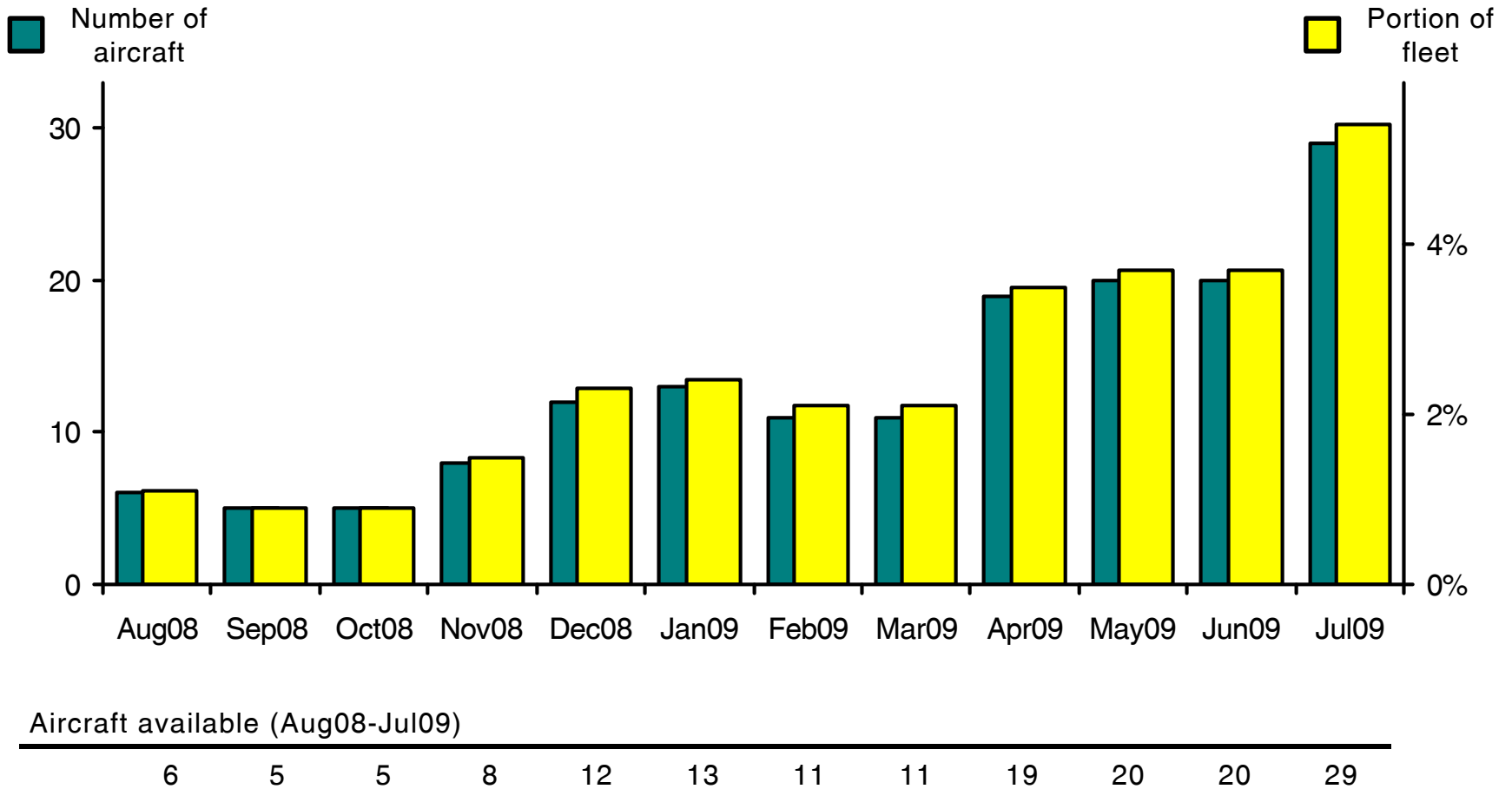
BAe 748 / ATP Aircraft Availability



Source: Airfax®

WORLDWIDE COMMERCIAL TRANSPORT AIRCRAFT AVAILABILITY

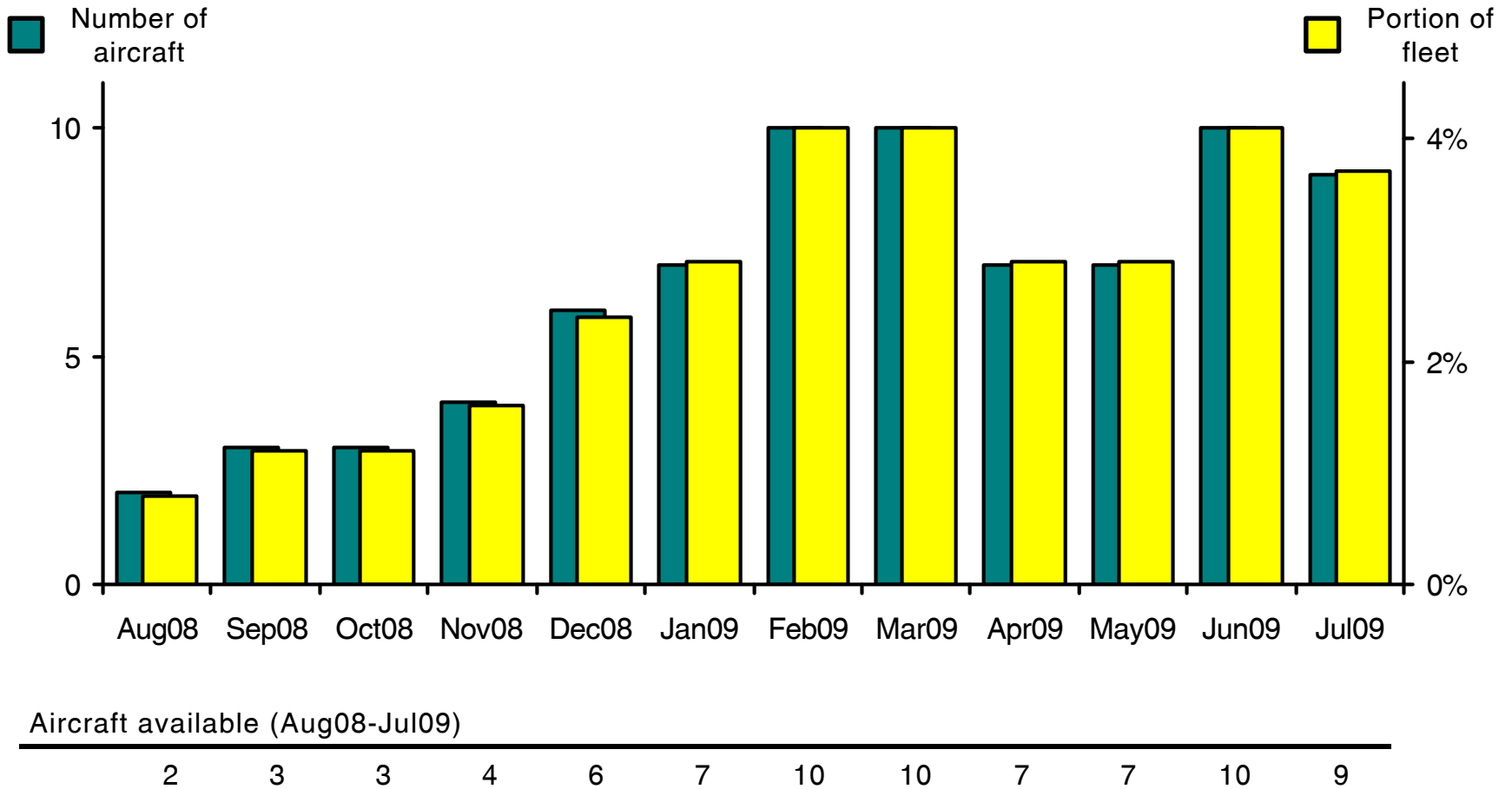
Airbus A300 Aircraft Availability



Source: Airfax®

WORLDWIDE COMMERCIAL TRANSPORT AIRCRAFT AVAILABILITY

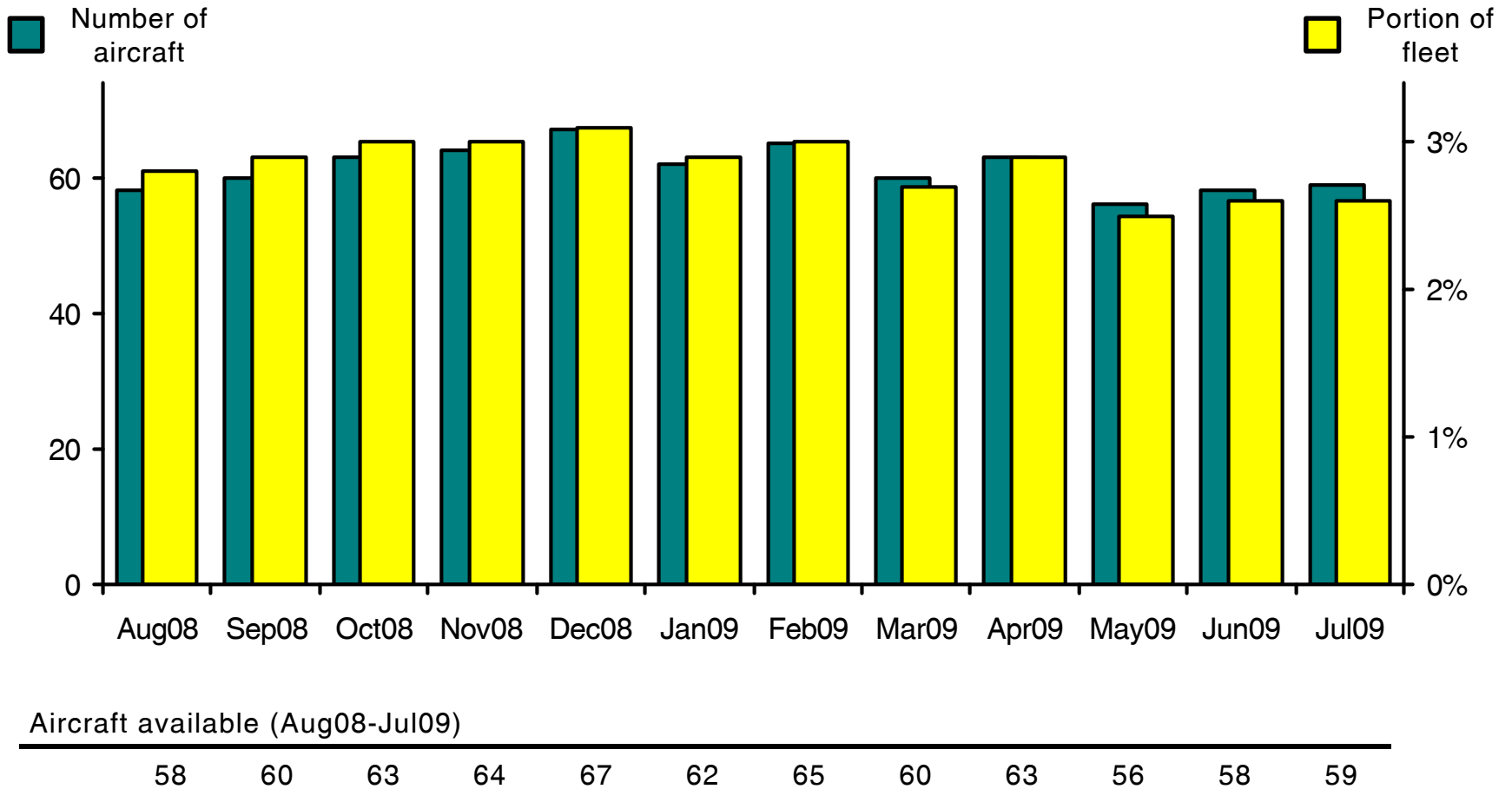
Airbus A310 Aircraft Availability



Source: Airfax®

WORLDWIDE COMMERCIAL TRANSPORT AIRCRAFT AVAILABILITY

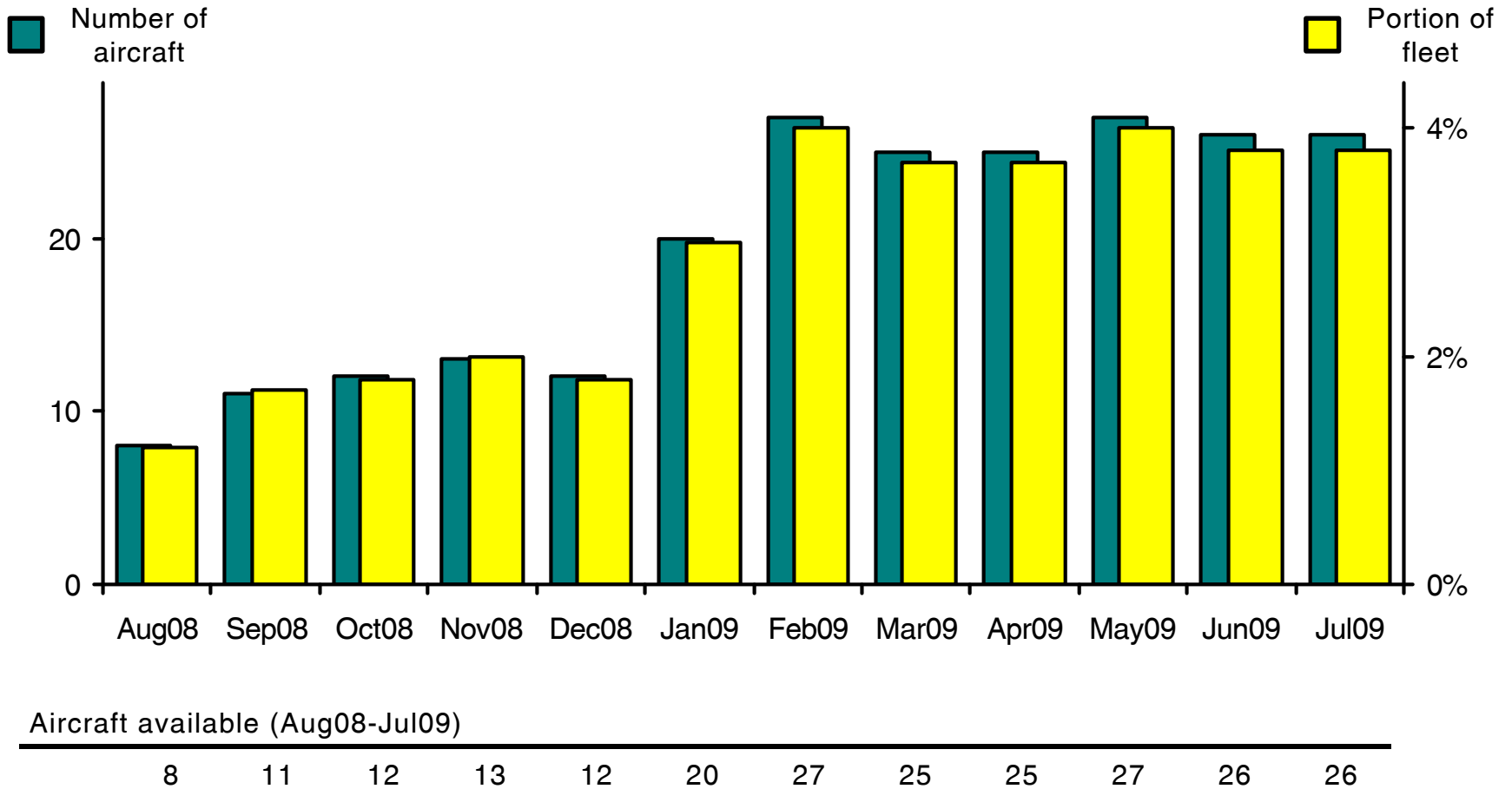
Airbus A319 / A320 / A321 Aircraft Availability



Source: Airfax®

WORLDWIDE COMMERCIAL TRANSPORT AIRCRAFT AVAILABILITY

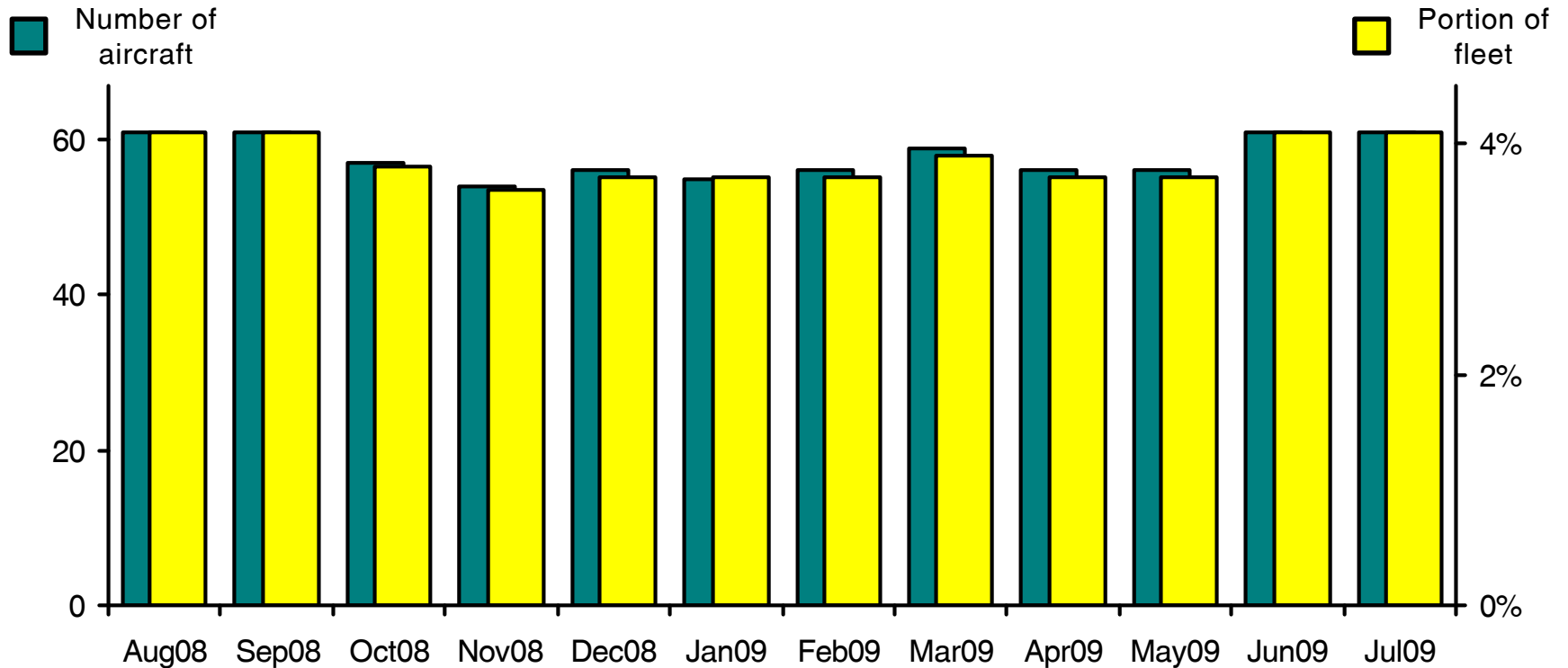
ATR 42 / 72 Aircraft Availability



Source: Airfax®

WORLDWIDE COMMERCIAL TRANSPORT AIRCRAFT AVAILABILITY

Boeing B727 Aircraft Availability



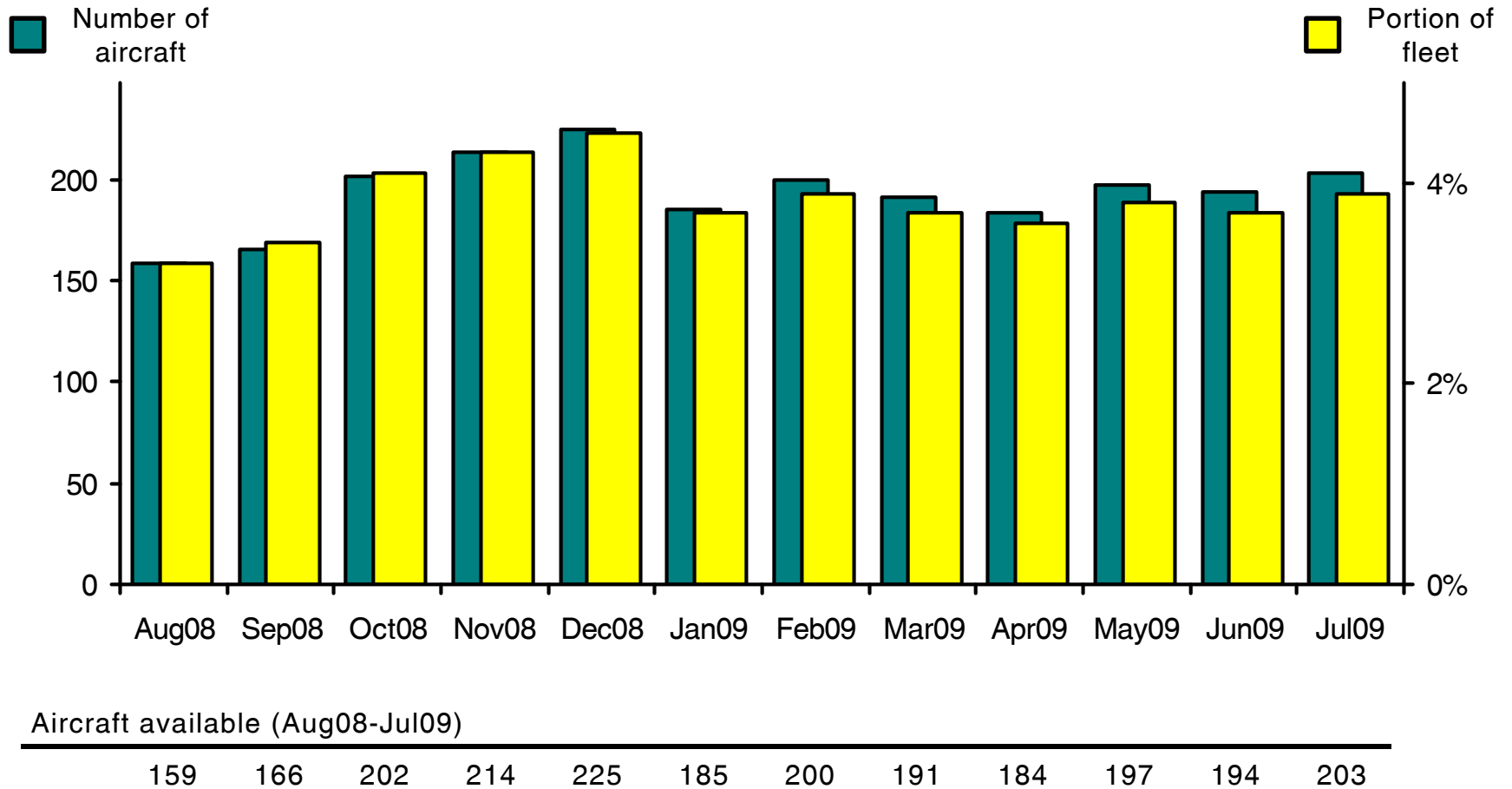
Aircraft available (Aug08-Jul09)

61 61 57 54 56 55 56 59 56 56 61 61

Source: Airfax®

WORLDWIDE COMMERCIAL TRANSPORT AIRCRAFT AVAILABILITY

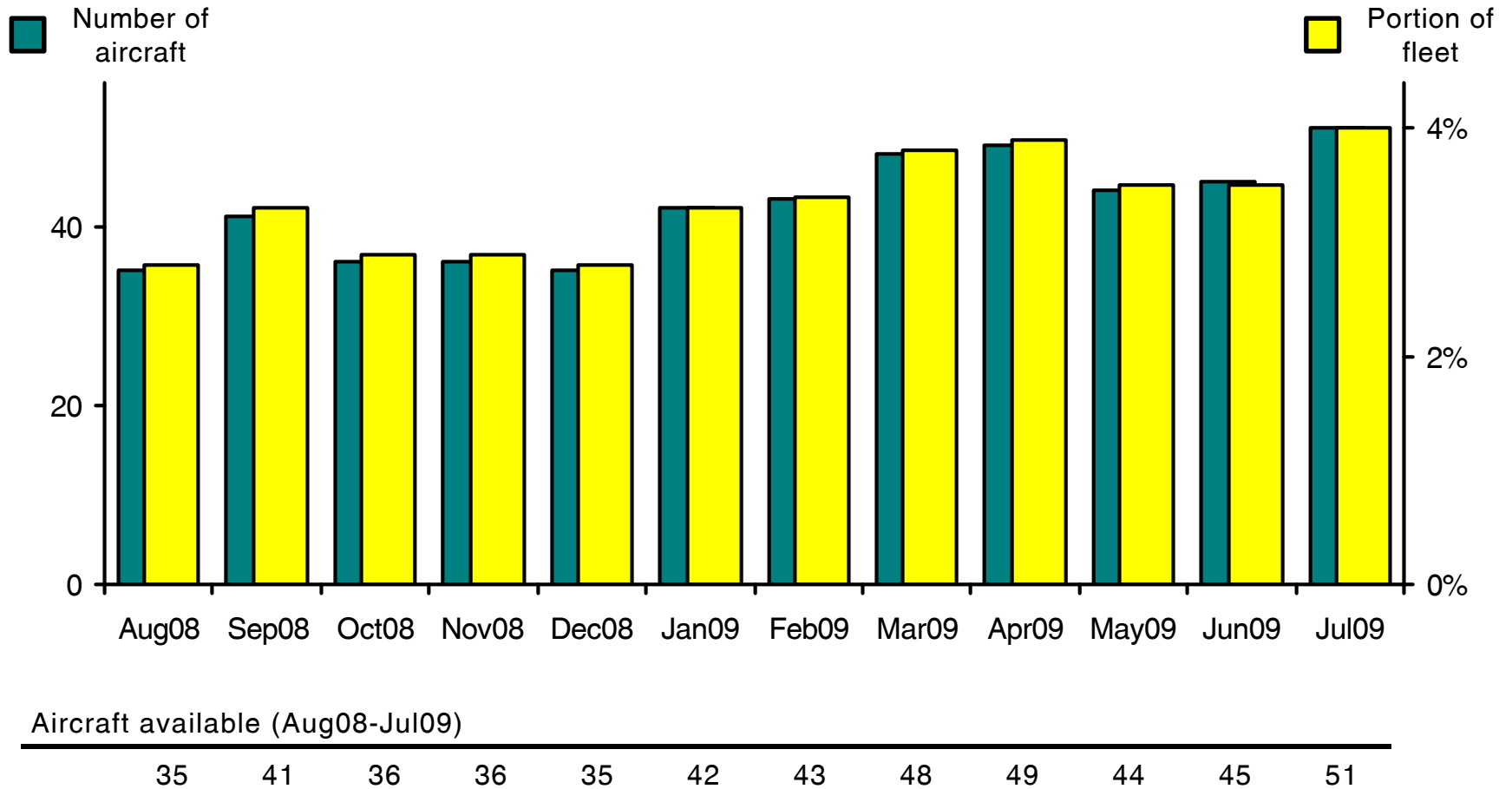
Boeing B737 Aircraft Availability



Source: Airfax®

WORLDWIDE COMMERCIAL TRANSPORT AIRCRAFT AVAILABILITY

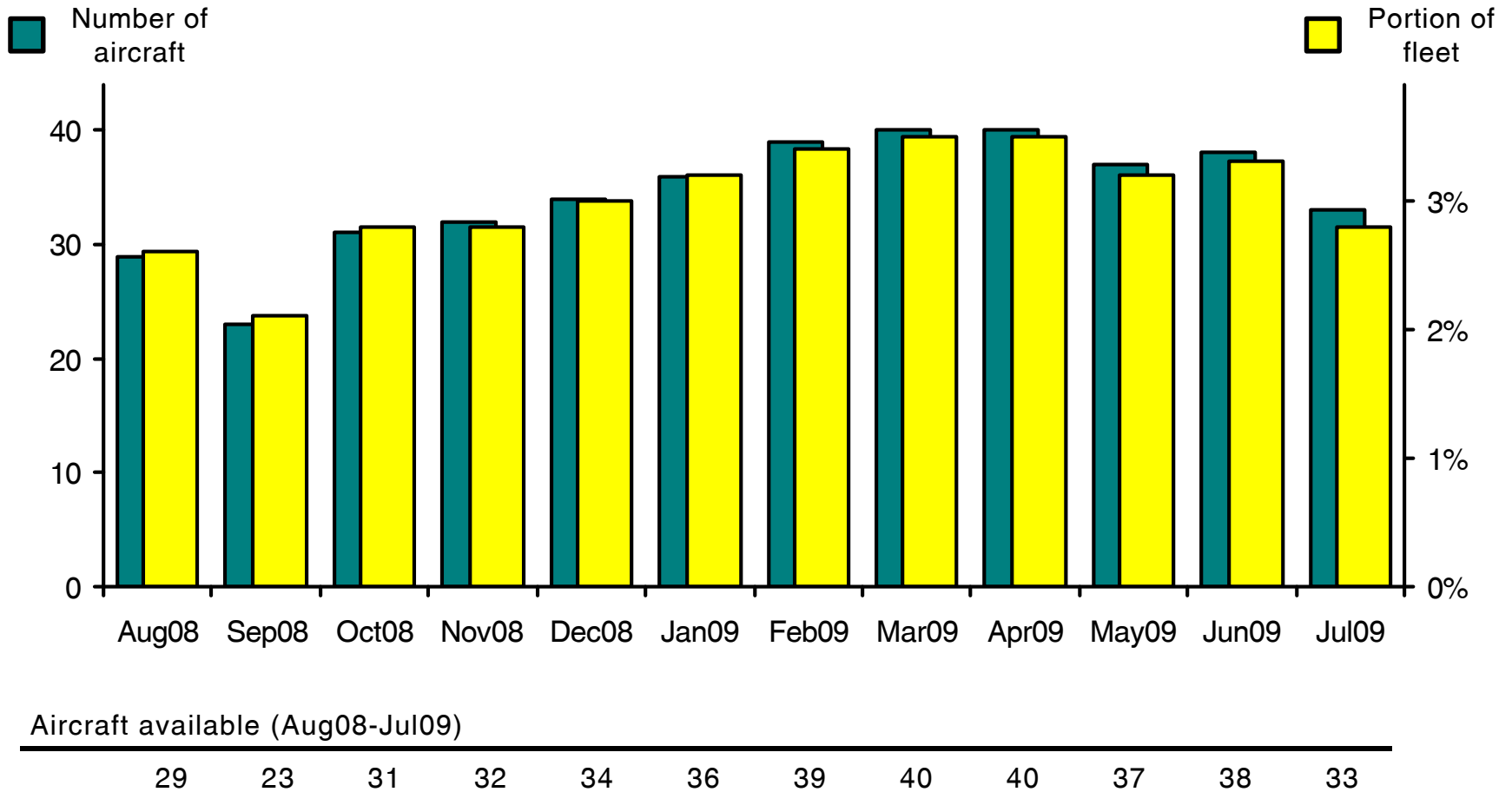
Boeing B747 Aircraft Availability



Source: Airfax®

WORLDWIDE COMMERCIAL TRANSPORT AIRCRAFT AVAILABILITY

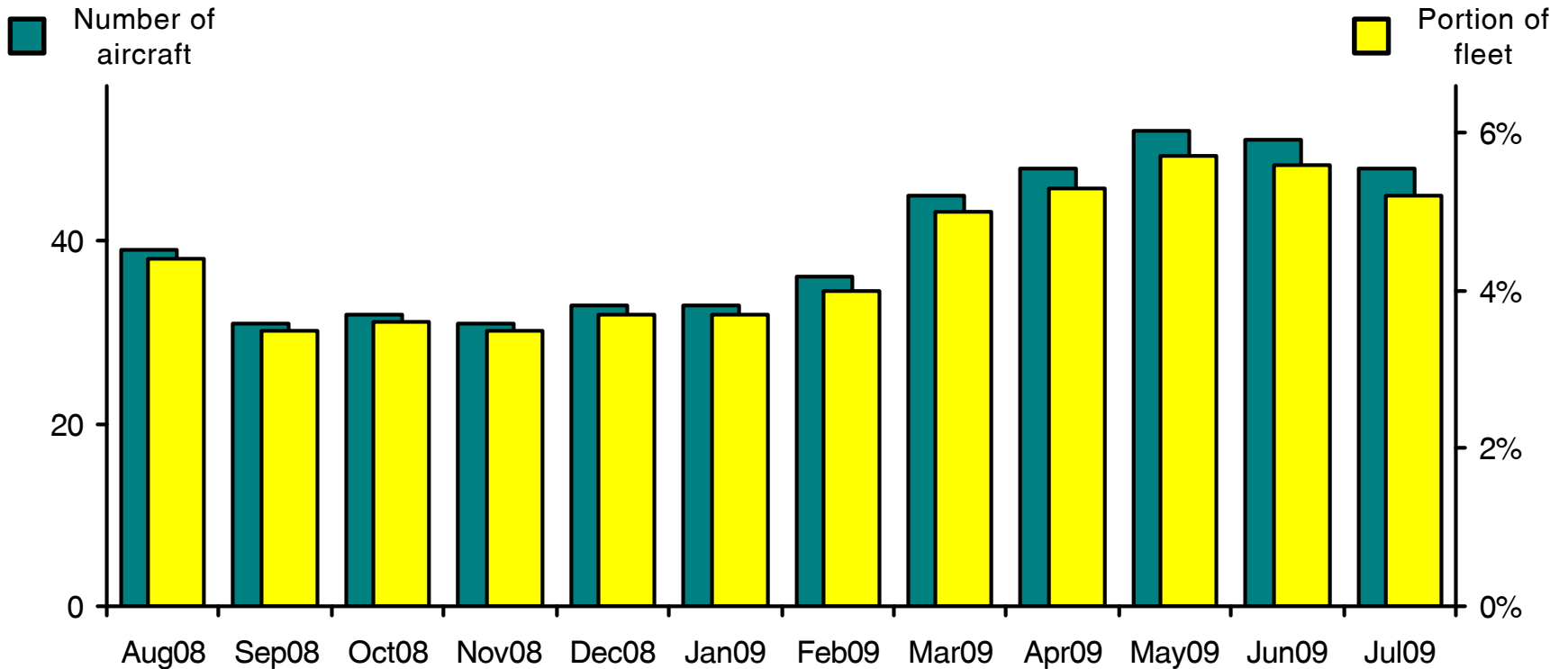
Boeing B757 Aircraft Availability



Source: Airfax®

WORLDWIDE COMMERCIAL TRANSPORT AIRCRAFT AVAILABILITY

Boeing B767 Aircraft Availability



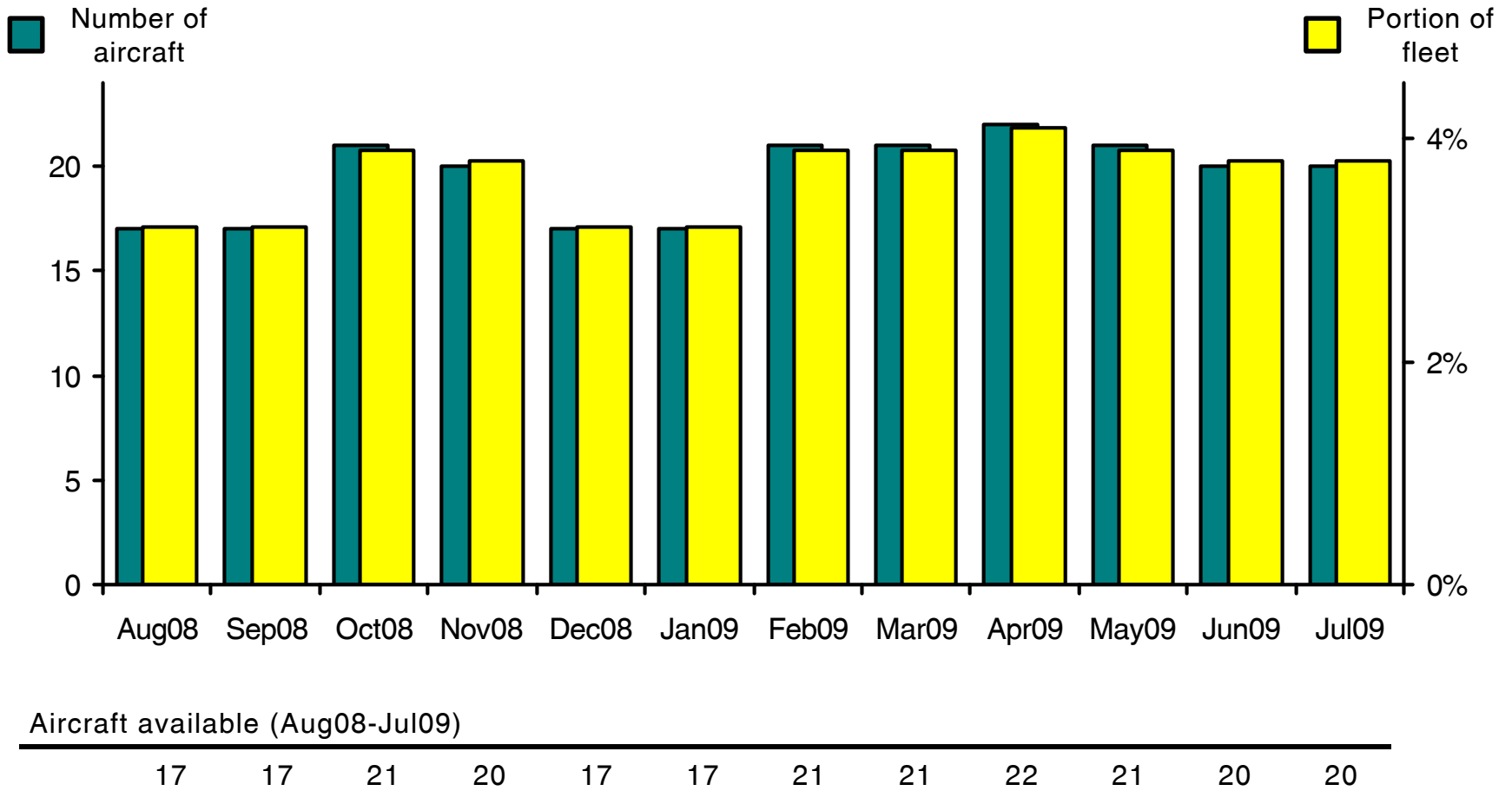
Aircraft available (Aug08-Jul09)

39 31 32 31 33 33 36 45 48 52 51 48

Source: Airfax®

WORLDWIDE COMMERCIAL TRANSPORT AIRCRAFT AVAILABILITY

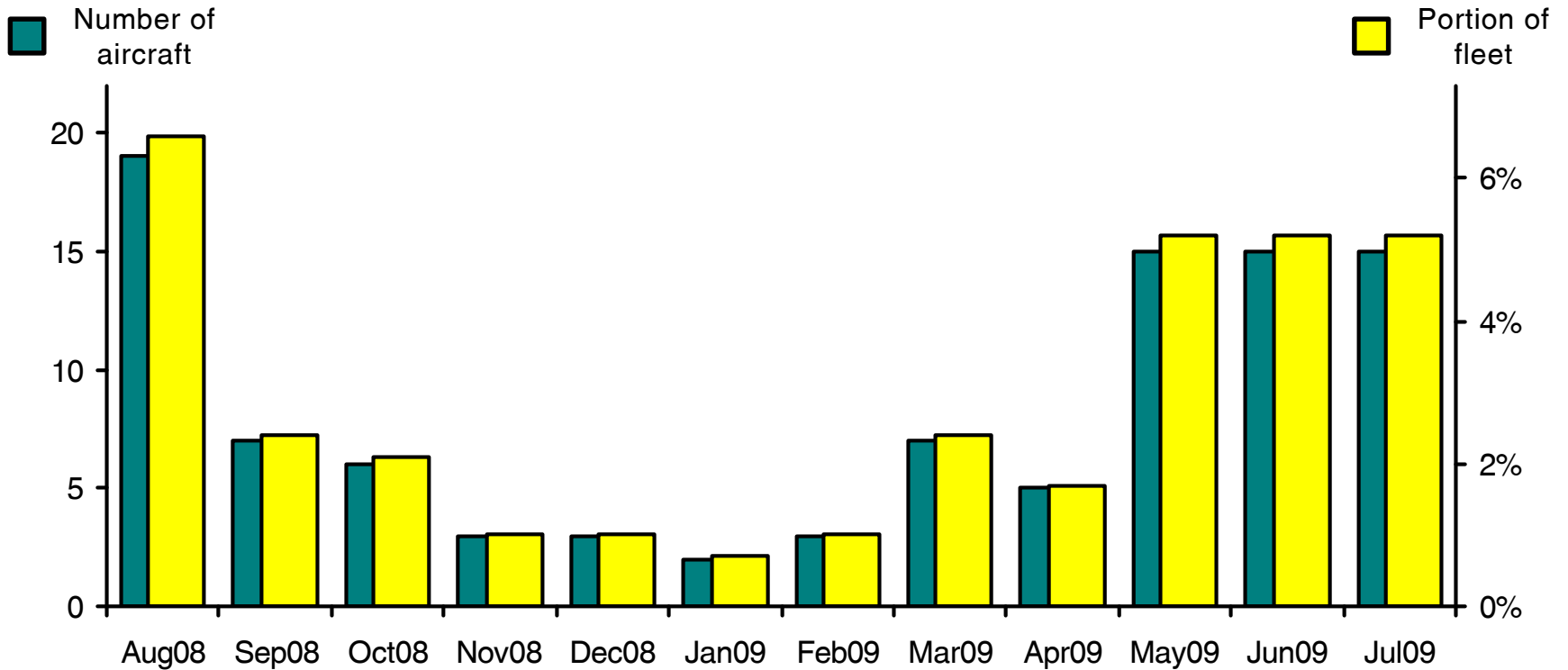
McDonnell Douglas DC-10 / MD11 Aircraft Availability



Source: Airfax®

WORLDWIDE COMMERCIAL TRANSPORT AIRCRAFT AVAILABILITY

McDonnell Douglas DC-8 Aircraft Availability



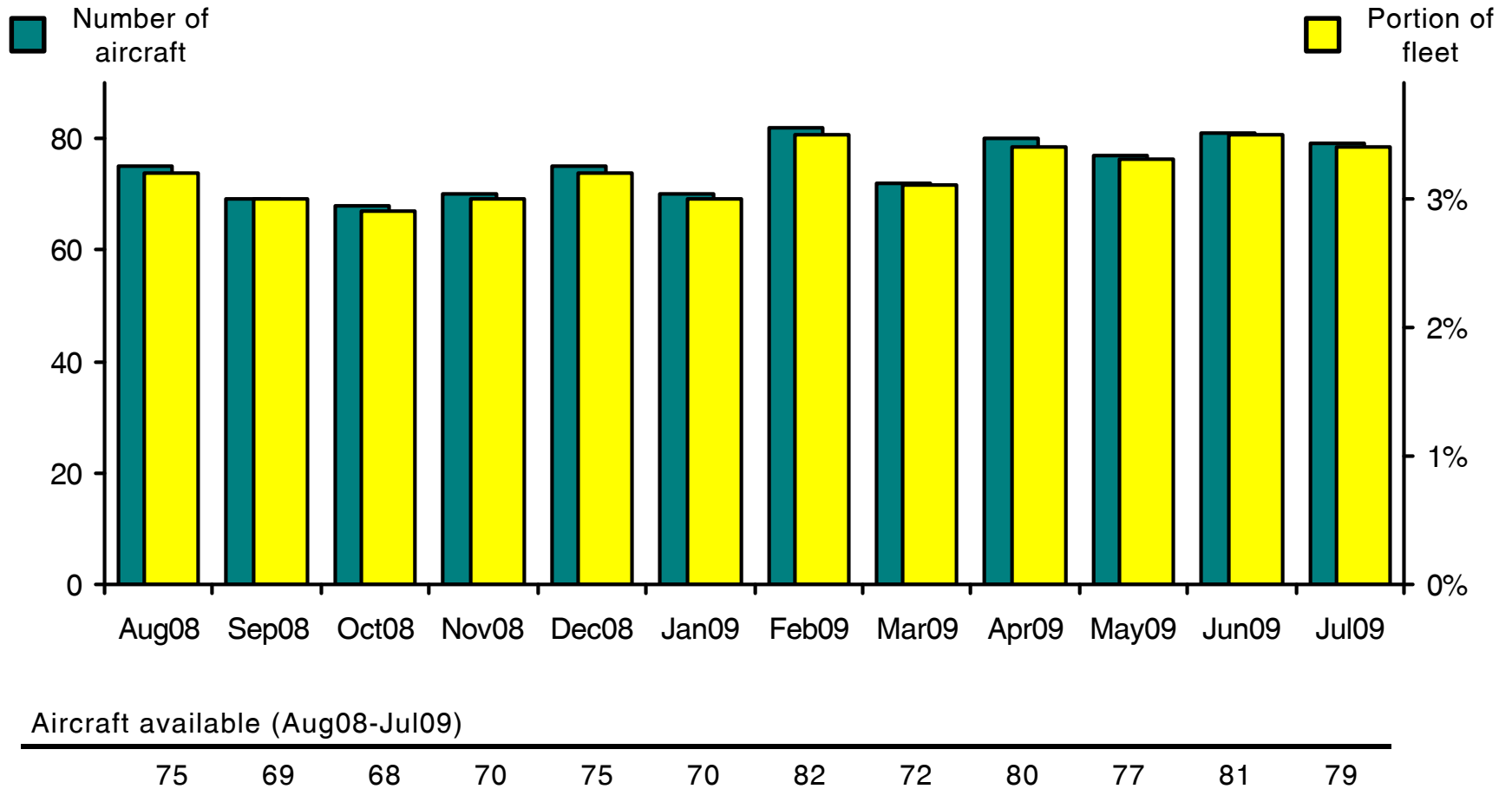
Aircraft available (Aug08-Jul09)

19 7 6 3 3 2 3 7 5 15 15 15

Source: Airfax®

WORLDWIDE COMMERCIAL TRANSPORT AIRCRAFT AVAILABILITY

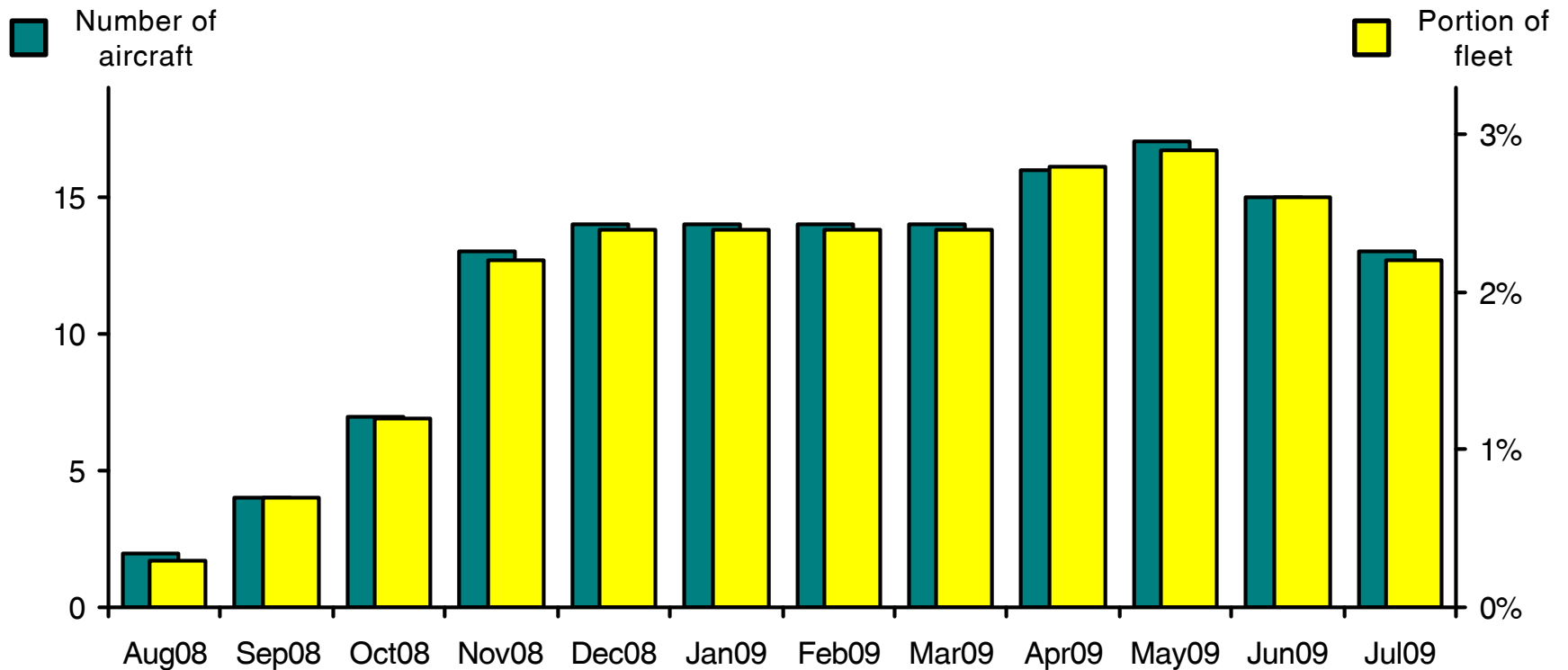
McDonnell Douglas DC-9 / MD80 Aircraft Availability



Source: Airfax®

WORLDWIDE COMMERCIAL TRANSPORT AIRCRAFT AVAILABILITY

DeHavilland DHC-6 Twin Otter Aircraft Availability



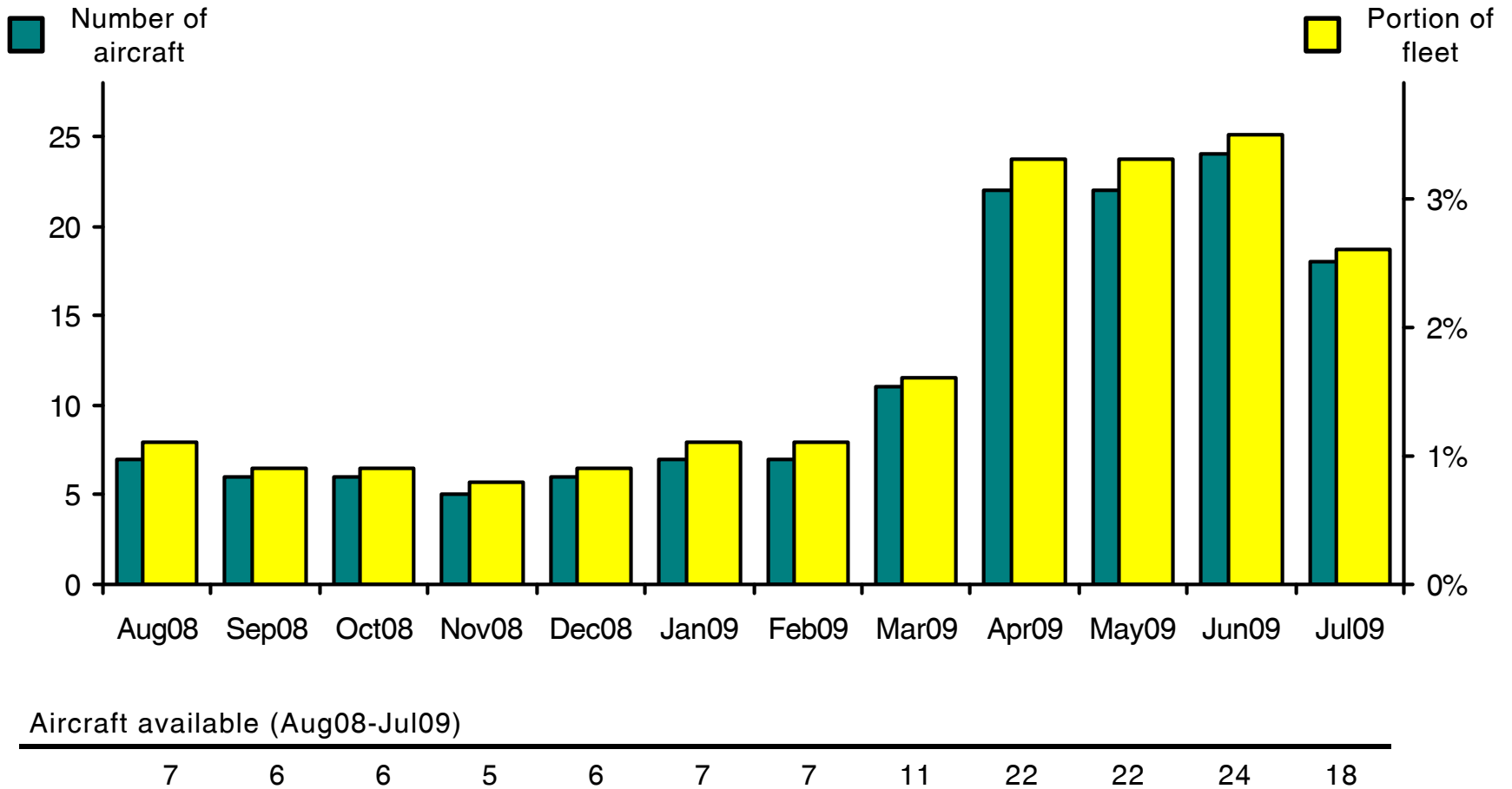
Aircraft available (Aug08-Jul09)

2 4 7 13 14 14 14 14 16 17 15 13

Source: Airfax®

WORLDWIDE COMMERCIAL TRANSPORT AIRCRAFT AVAILABILITY

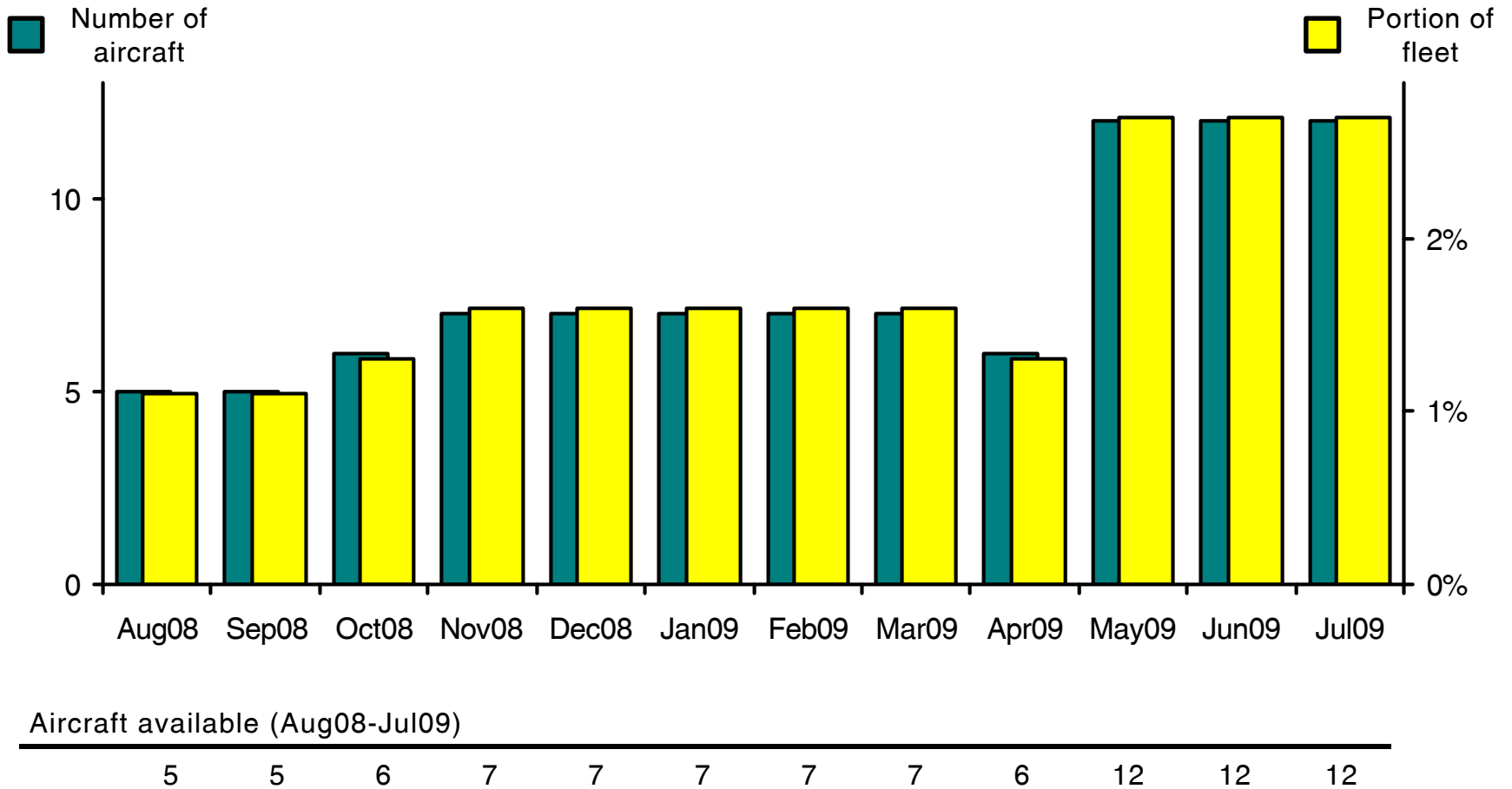
DeHavilland DHC-8 Aircraft Availability



Source: Airfax®

WORLDWIDE COMMERCIAL TRANSPORT AIRCRAFT AVAILABILITY

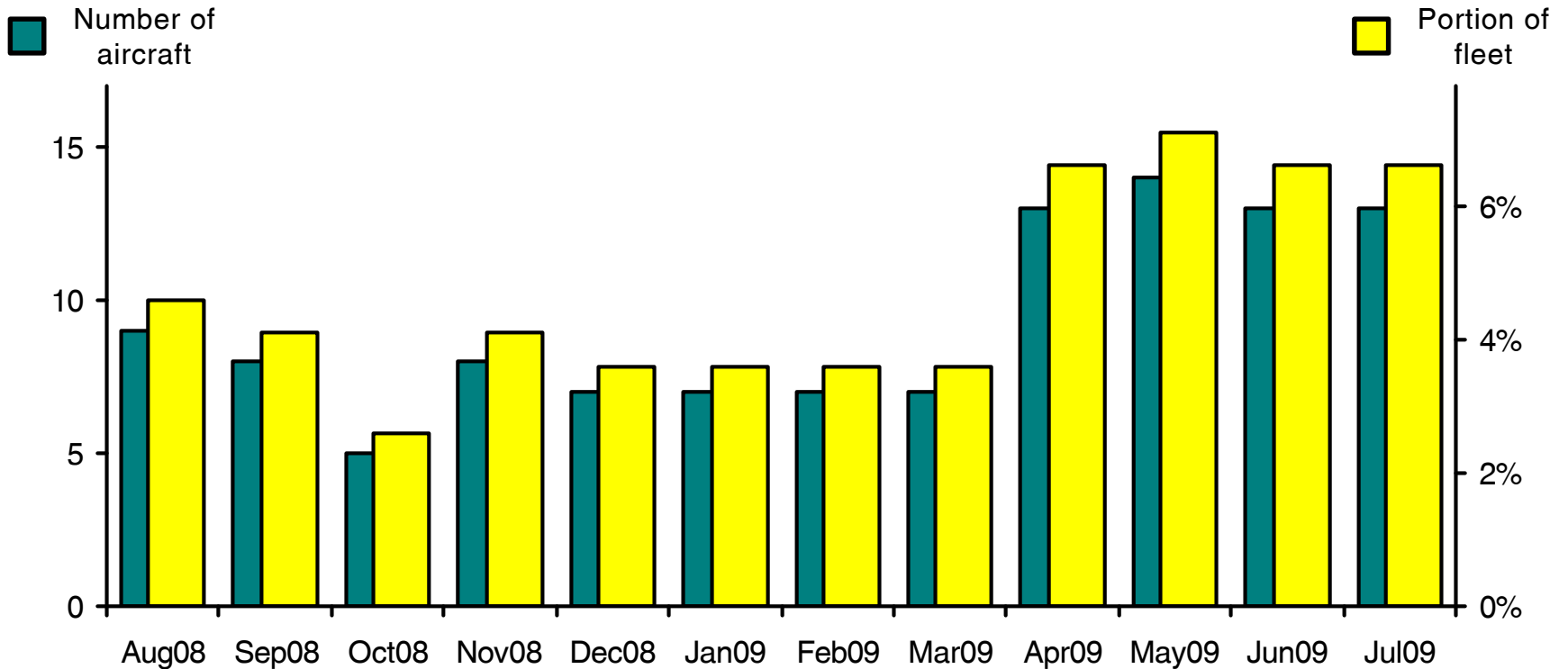
Fokker F27 Aircraft Availability



Source: Airfax®

WORLDWIDE COMMERCIAL TRANSPORT AIRCRAFT AVAILABILITY

Fokker F50 Aircraft Availability

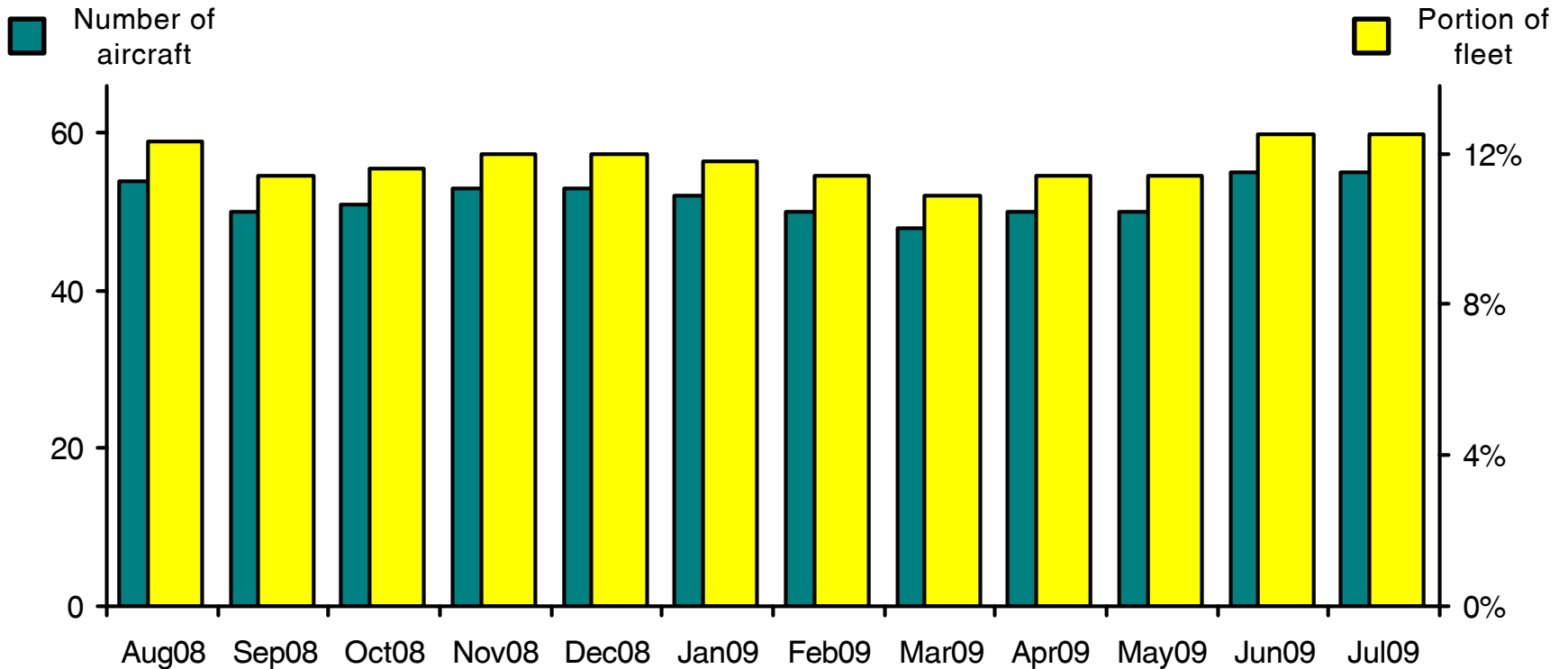


Aircraft available (Aug08-Jul09)

9 8 5 8 7 7 7 7 13 14 13 13

WORLDWIDE COMMERCIAL TRANSPORT AIRCRAFT AVAILABILITY

BAe Jetstream J31 / J32 / J41 Aircraft Availability



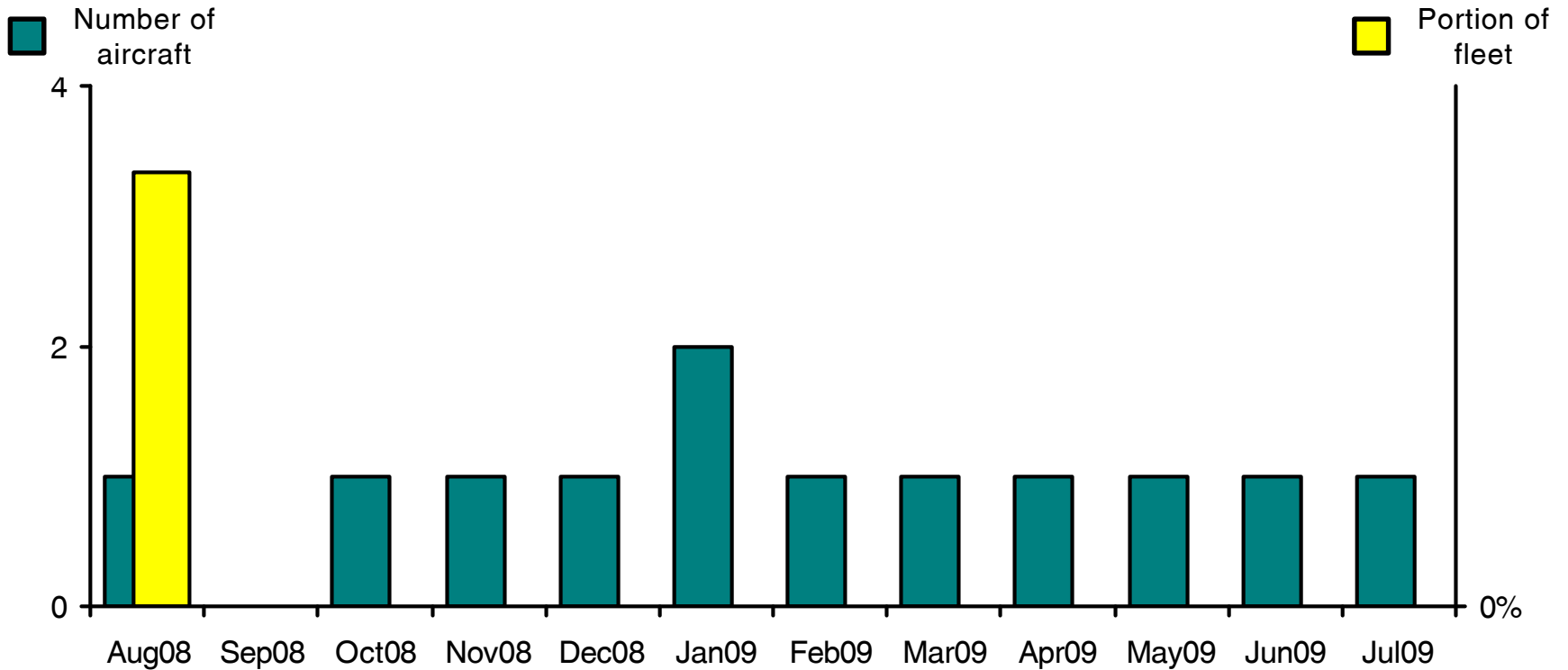
Aircraft available (Aug08-Jul09)

54 50 51 53 53 52 50 48 50 50 55 55

Source: Airfax®

WORLDWIDE COMMERCIAL TRANSPORT AIRCRAFT AVAILABILITY

Lockheed L1011 Tristar Aircraft Availability



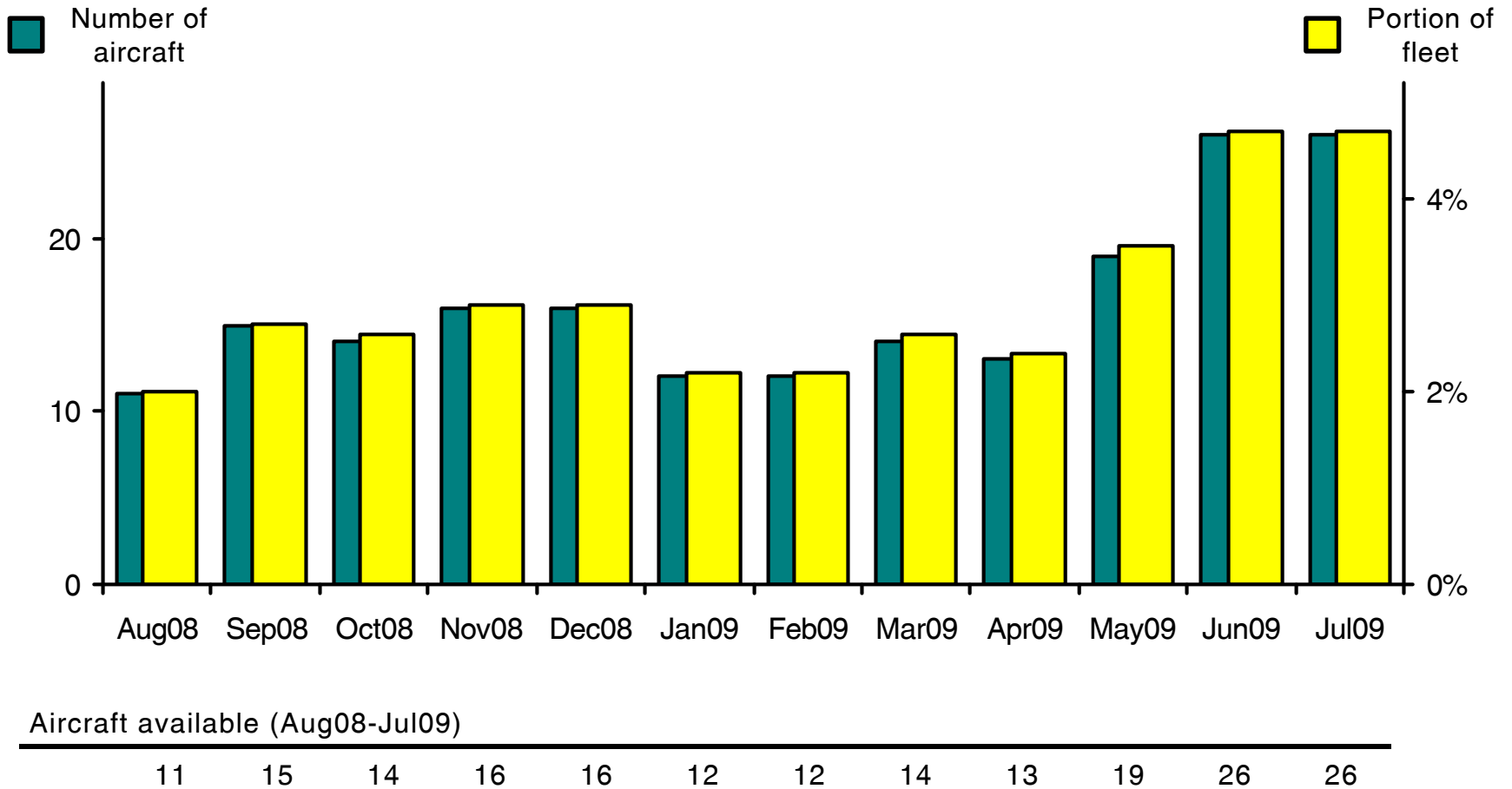
Aircraft available (Aug08-Jul09)

1 0 1 1 1 2 1 1 1 1 1 1

Source: Airfax®

WORLDWIDE COMMERCIAL TRANSPORT AIRCRAFT AVAILABILITY

Fairchild Metro / Merlin IV Aircraft Availability



Source: Airfax®